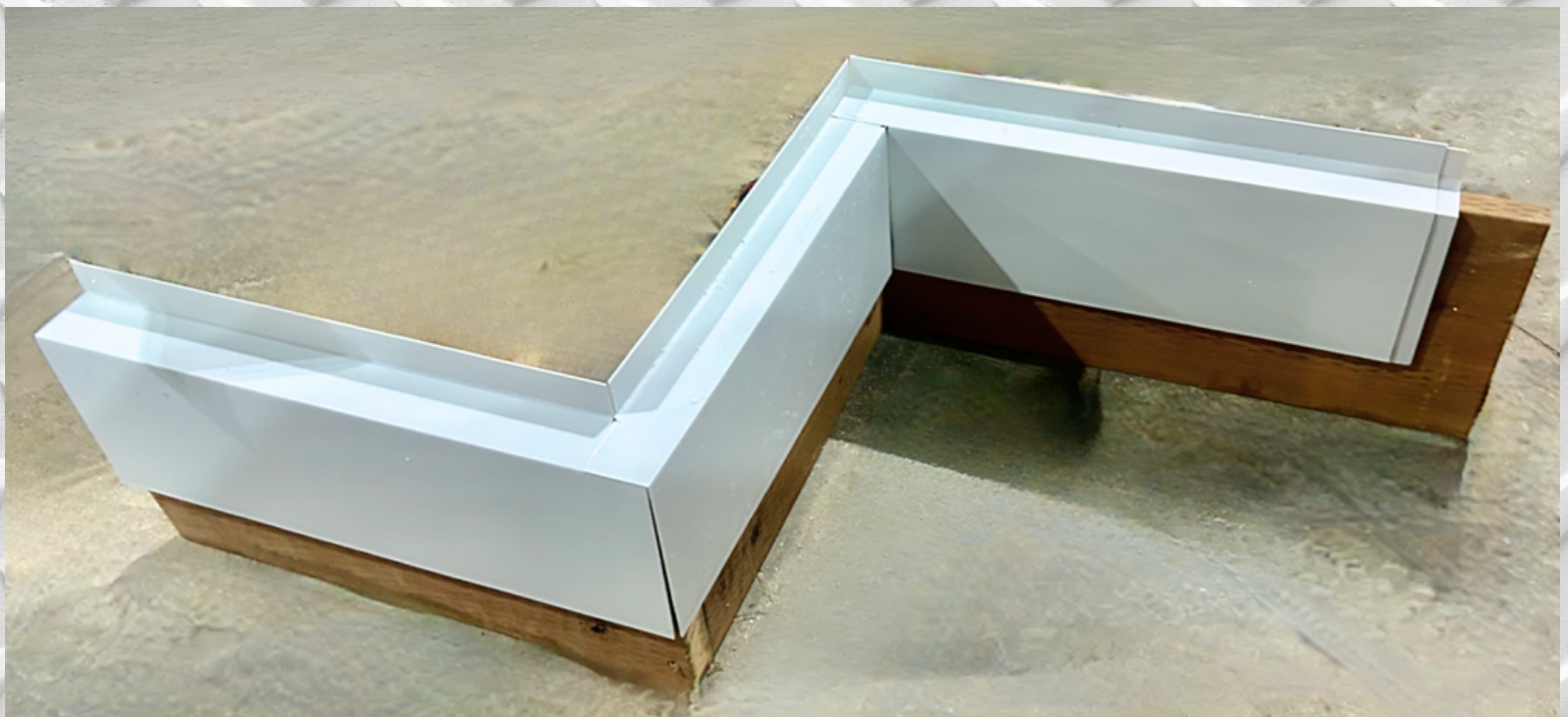


ALL ABOUT FLASHING

YOU'VE ASKED, WE'VE DELIVERED!

CODE COMPLIANT PROTECTIVE FLASHING DESIGNED FOR FLASHING OVER PERIMETER INSULATION ON MANY FOUNDATION TYPES. EZ FLASH PROVIDES ADDED PROTECTION FROM WALL TO BOTTOM PLATE, AND TOP OF FOUNDATION (MONO SLAB®, MONOLITHIC SLAB, OR STEM WALL) FOR A CONTINUOUS MOISTURE BARRIER. *EZ FLASH FLASHING, ROUGH GRAY 10' LENGTHS *CAN BE USED FOR STEP FLASHING, OR STRAIGHT FLASHING



ADVANTAGES

CODE COMPLIANT PROTECTIVE FLASHING DESIGNED SPECIFICALLY FOR MONO SLAB® EZ FORM. PROVIDES ADDED PROTECTION FROM WALL TO BOTTOM PLATE, AND TOP OF MONO SLAB® EZ FORM FOR A CONTINUOUS MOISTURE BARRIER. MADE OF DURABLE PVC. CONTAINS UV INHIBITOR TO RETARD DETERIORATION AND COLOR CHANGES.



Office: 208-558-5200
info@monoslabezform.com
www.monoslabezform.com



PRICING

PRODUCT	Product Code	MSRP
Flashing	FLASHING DIMENSIONS: 1.5" 2.5" 7.5"	FLSH-ADJ-10 Mono Slab® Flashing, Rough Gray 10' Lengths Can be used for step down, or straight flashing
	EACH CRATE CONTAINS: 180 10' PIECES (1,800 LIN. FT)	\$59.60 PER 10' LENGTH + SHIPPING

ADDITIONAL INFORMATION

PRODUCT	Product Code	Bundle & Packaging	Crate Configurations
Flashing	FLASHING DIMENSIONS: 1.5" 2.5" 7.5"	FLSH-ADJ-10 Mono Slab® Flashing, Rough Gray 10' Lengths Can be used for step down, or straight flashing	 CRATE DIMENSIONS: 30" TALL 41" WIDE 122" LONG
			EACH CRATE CONTAINS: 180 10' PIECES (1,800 LIN. FT)

MECHANICAL PROPERTIES

Tensile Strength: 6500 PSI ASTM D-638

Flexural Strength: 11800 PSI ASTM D-790

THERMAL PROPERTIES

Deflection Temperature at 264 PSI: 162°F
ASTM D-648

Temperature Range: -40°F to 162°F

WHEN AND WHERE TO USE

Residential, Commercial and Light Industrial Construction

- Mono Slab® EZ Form flashing replaces traditional metal, plaster or stucco coatings, and adhesive type flashing.

ADVANTAGES

- Code compliant protective flashing designed specifically for Mono Slab® EZ Form.
- Provides added protection from wall to bottom plate, and top of Mono Slab® EZ Form for a continuous moisture barrier.
- Made of durable PVC.
- Contains UV inhibitor to retard deterioration and color changes.

INSTALLATION

Flashing to match the detail of the top and side profiles of the 2 1/2" x 7 1/2" leg against the slab.

- Either cantilever 2x6 wall or set the entire wall on slab.
- If cantilevering the wall and sheathing, run flat detailed flashing down just below grade.
- If not cantilevering the wall, run a stepped flashing down the wall, across the top 2.5" and then down below grade.

Office: 208-558-5200
 info@monoslabezform.com
 www.monoslabezform.com

PRODUCT **Product Benefits** **Flashing Material Information**

Flashing

Code compliant protective flashing designed specifically for Mono Slab® EZ Form Provides added protection from wall to bottom plate, and top of Mono Slab® EZ Form for a continuous moisture barrier.

- Made of durable PVC
- Contains UV inhibitor to retard deterioration and color changes

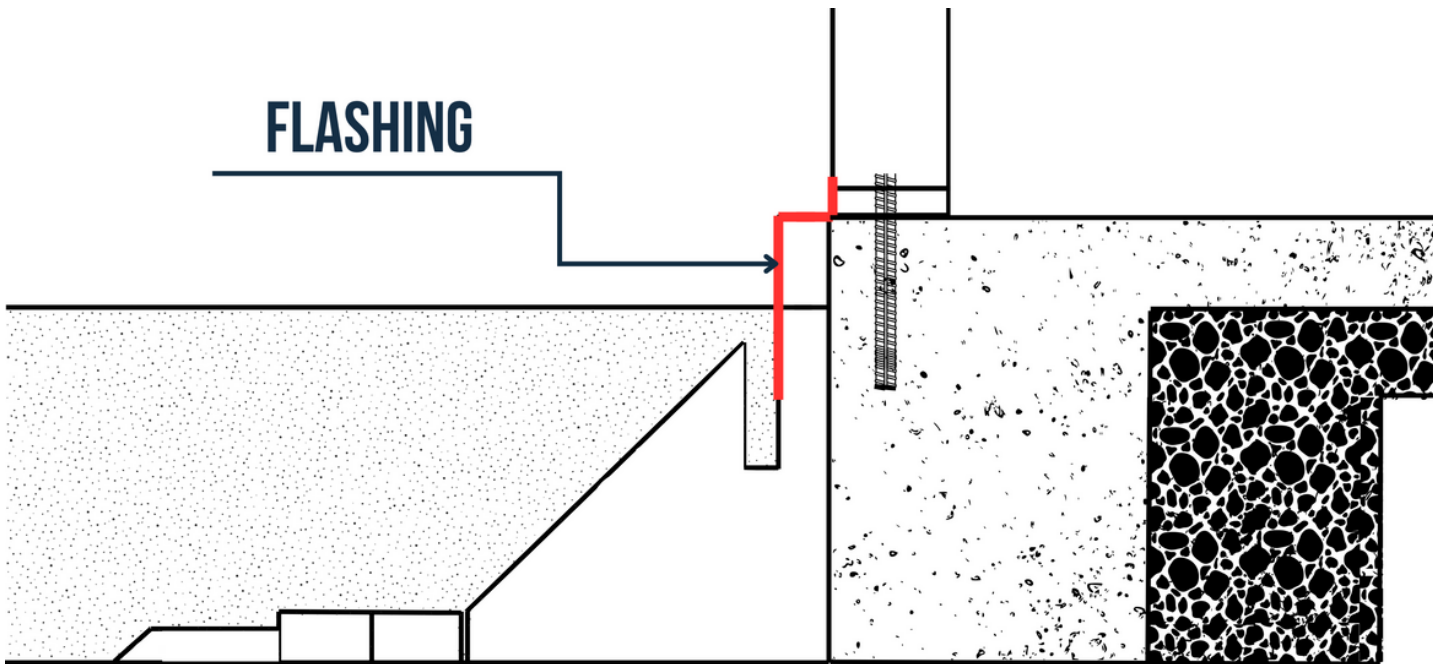
MECHANICAL PROPERTIES

Tensile Strength: 6500 PSI ASTM D-638

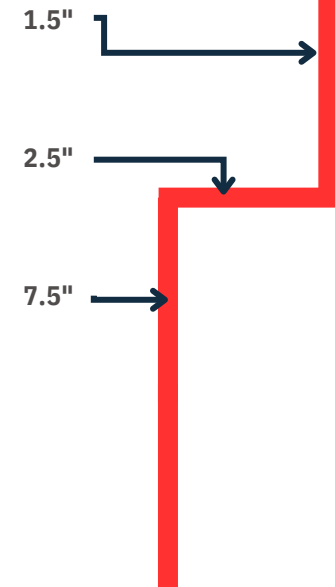
Flexural Strength: 11800 PSI ASTM D-790

THERMAL PROPERTIES

Deflection Temperature at 264 PSI: 162°F
ASTM D-648



FLASHING DIMENSIONS:





FOUNDATION FLASHING MADE EASY

SAVE TIME, LABOR, MONEY | PVC PRODUCT USED TO COVER AND PROTECT FOUNDATION PERIMETER

PRODUCT DESCRIPTION

You've asked, we've delivered!

Code compliant protective flashing designed specifically for Mono Slab® EZ Form Provides added protection from wall to bottom plate, and top of Mono Slab® EZ Form for a continuous moisture barrier.

*Mono Slab® Flashing, Rough Gray 10' Lengths

*Can be used for step down, or straight flashing

MANUFACTURED IN ACCORDANCE WITH ASTM D-638, ASTM D-790, ASTM D648



WHEN AND WHERE TO USE

Residential, Commercial and Light Industrial Construction

- Mono Slab® EZ Form flashing replaces traditional metal, plaster or stucco coatings, and adhesive type flashing.

ADVANTAGES

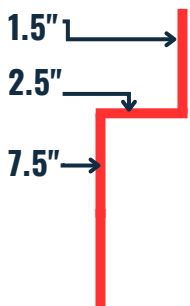
- Code compliant protective flashing designed specifically for Mono Slab® EZ Form.
- Provides added protection from wall to bottom plate, and top of Mono Slab® EZ Form for a continuous moisture barrier.
- Made of durable PVC.
- Contains UV inhibitor to retard deterioration and color changes.

INSTALLATION

Flashing to match the detail of the top and side profiles of the 2 1/2" x 7 1/2" leg against the slab.

- Either cantilever 2x6 wall or set the entire wall on slab.
- If cantilevering the wall and sheathing, run flat detailed flashing down just below grade.
- If not cantilevering the wall, run a stepped flashing down the wall, across the top 2.5" and then down below grade.

FLASHING DIMENSIONS:



MECHANICAL PROPERTIES

Tensile Strength: 6500 PSI ASTM D-638

Flexural Strength: 11800 PSI ASTM D-790

THERMAL PROPERTIES

**Deflection Temperature at 264 PSI: 162°F
ASTM D-648**

Temperature Range: -40°F to 162°F

CRATE DIMENSIONS:

30" TALL
41" WIDE
122" LONG

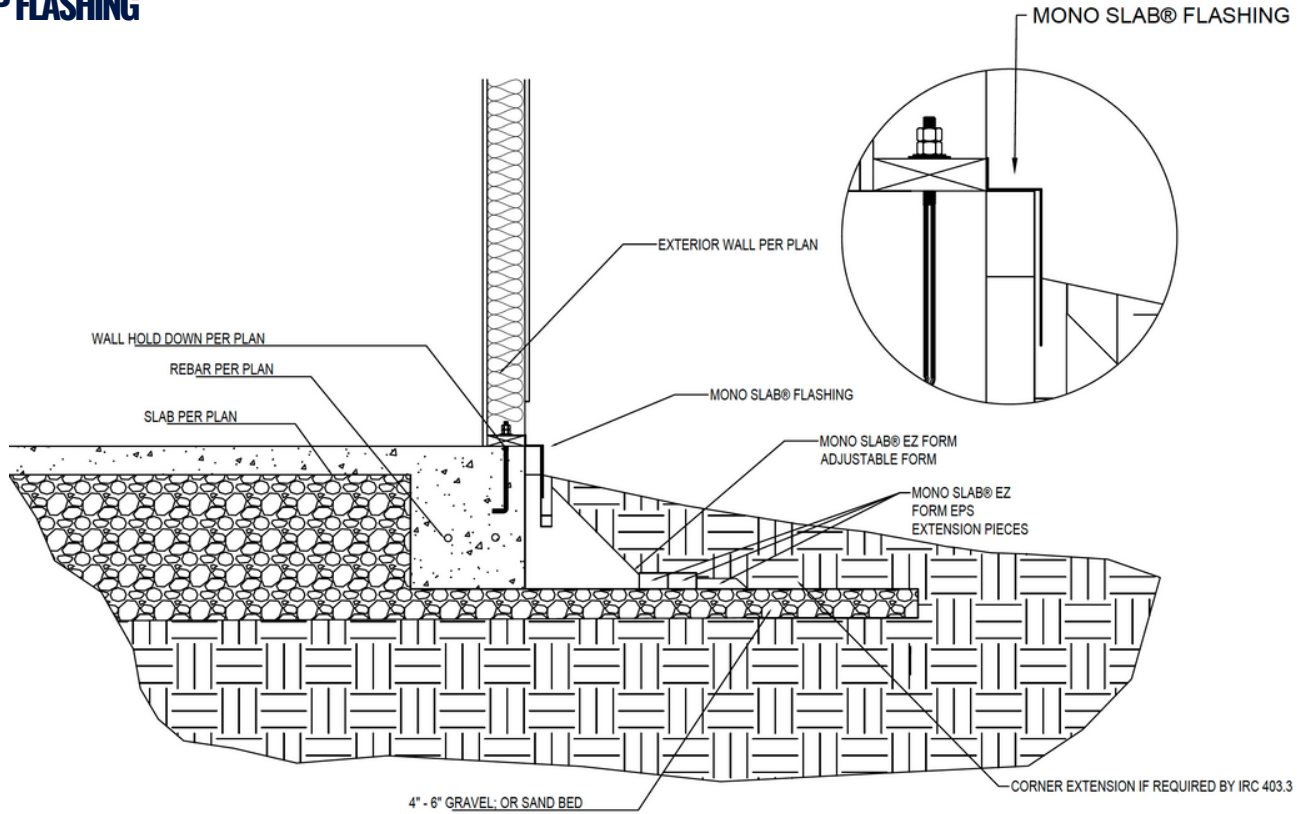
EACH CRATE CONTAINS:

180 10' PIECES (1,800 LIN. FT)

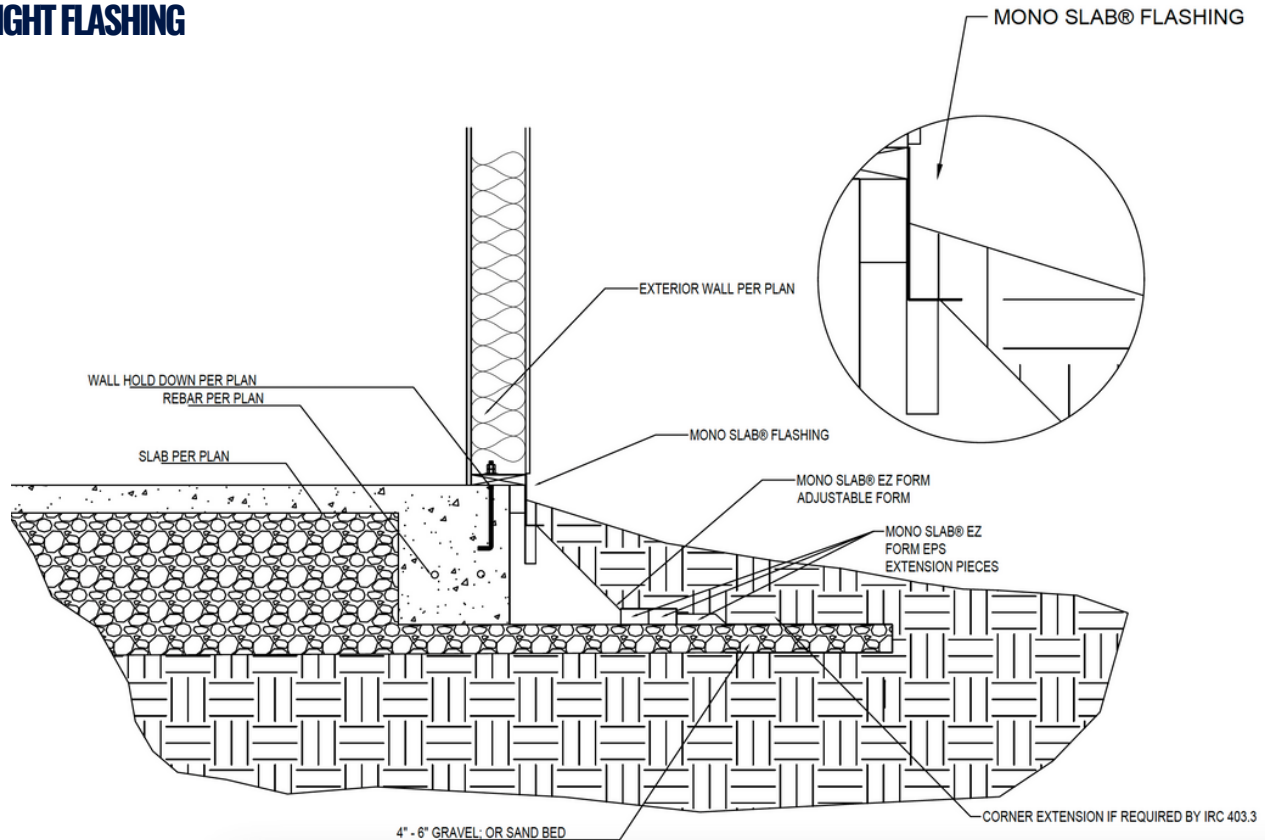


Office: 208-558-5200
info@monoslabezform.com
www.monoslabezform.com

STEP FLASHING



STRAIGHT FLASHING



Office: 208-558-5200
 info@monoslabezform.com
 www.monoslabezform.com

Temperature Range:
 -40°F to 162°F

MANUFACTURED IN ACCORDANCE WITH
 ASTM D-638, ASTM D-790, ASTM D648