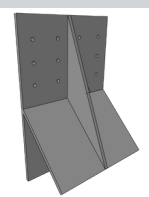
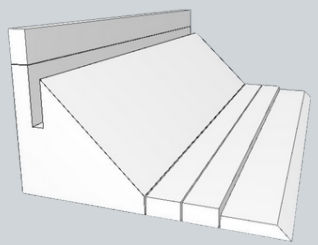




PRODUCT	Product Code	Product Description	Product Benefits
Adjustable	ADJ-2031-SU	Adjustable Mono Slab® EZ Form (replaces A-1830 Arctic Form, S-1616 Standard Form)	<ul style="list-style-type: none"> Finally an adjustable Frost-Protected Shallow Foundation form Easy to level to +/- 1/2 inch The new Adjustable Mono Slab® EZ Form provides over 51 inches of frost protection Eliminates waste and garbage (no need to breakaway the top triangular portion) Complies with 2022 IRC, IBC, and IECC Codes
		Mono Slab® 3 Breakaway EPS Extensions (3) 2.25"x4"x8'	
Level Up	LVLUP	Extension bracket (54 per box) 13 Boxes per order with full load of Adjustable Forms.	<p>EACH TRUCKLOAD CONTAINS:</p> <p>- 26 BUNDLES OF ADJUSTABLE FORMS ADJ-2031-SU (WITH THREE 4" EPS EXTENSIONS PER FORM)</p> <p>-648 (12 BOXES) LEVEL UP EXTENSION BRACKETS LVLUP (TO ALLOW FOR TWO EXTENSION BRACKETS PER FORM)</p> <p>** PRICING IS PER BUNDLE OF 12 FORMS WITH EPS EXTENSIONS, AND LEVEL UP EXTENSION BRACKETS INCLUDED</p>



SPECIAL ORDER PRODUCTS	Product Code	Product Description	Product Benefits
Flashing	FLSH-ADJ-10	Mono Slab® Flashing, Rough Gray 10' Lengths	<ul style="list-style-type: none"> Code compliant protective flashing designed specifically for Mono Slab® EZ Form Provides added protection from wall to bottom plate, and top of Mono Slab® EZ Form for a continuous moisture barrier
		Can be used for step down, or straight flashing	
Commercial	C-2424-S 24"x24"x8'	24"x24"x8' -Straight	<ul style="list-style-type: none"> Primary use Commercial & Industrial The Mono Slab® Commercial Form provides 48 inches of frost protection
Interior	IF-1418-S 14"x18"x8'	18" leg to be used to accommodate 24" Slab, 14" leg to be used to accommodate 20" Slab	<ul style="list-style-type: none"> Provides support for sub-slab insulation Minimizes concrete overages

