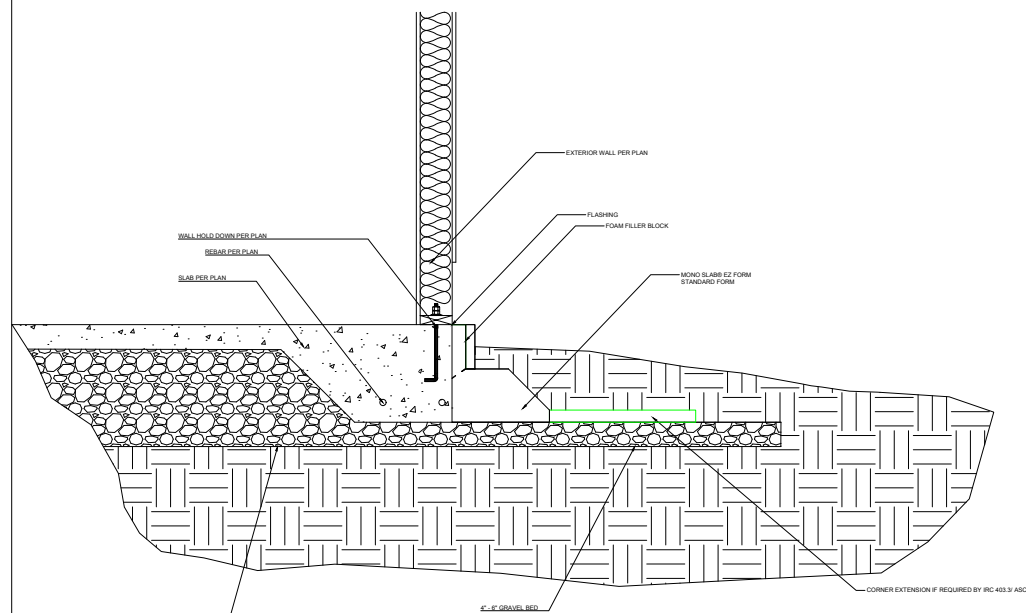
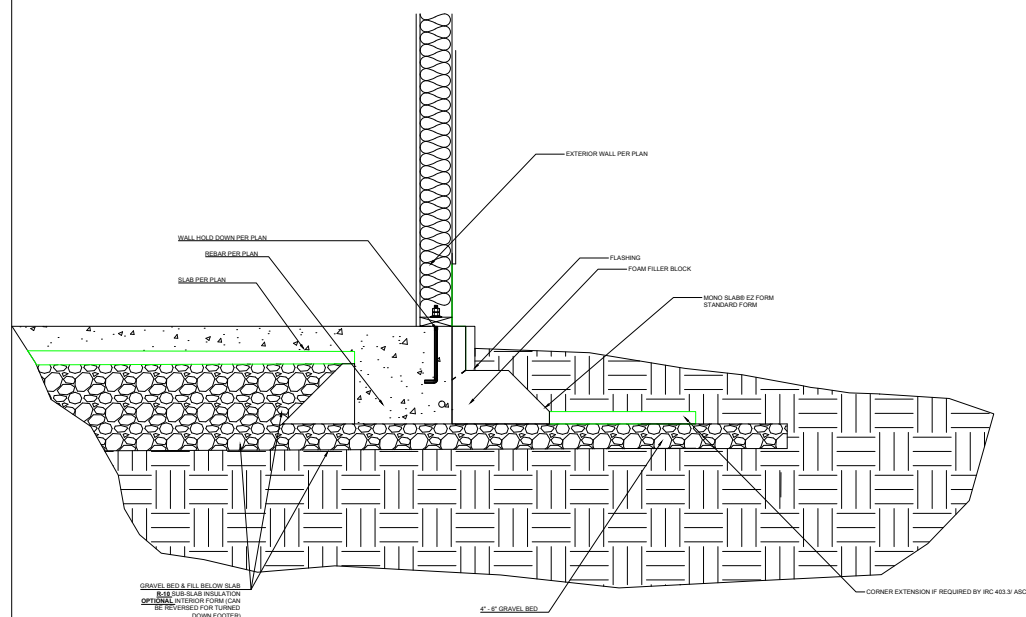


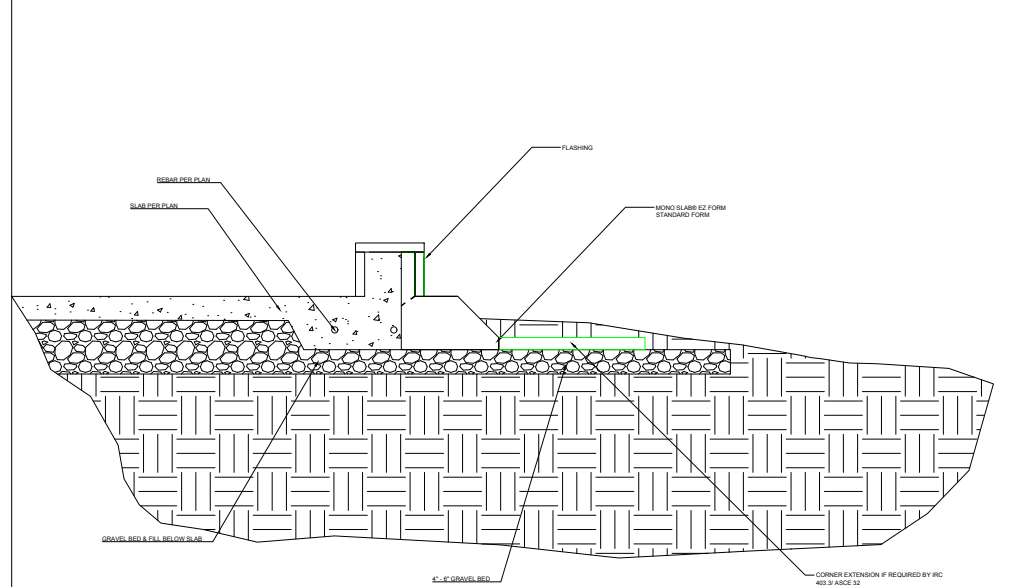
1- HEATED SPACE



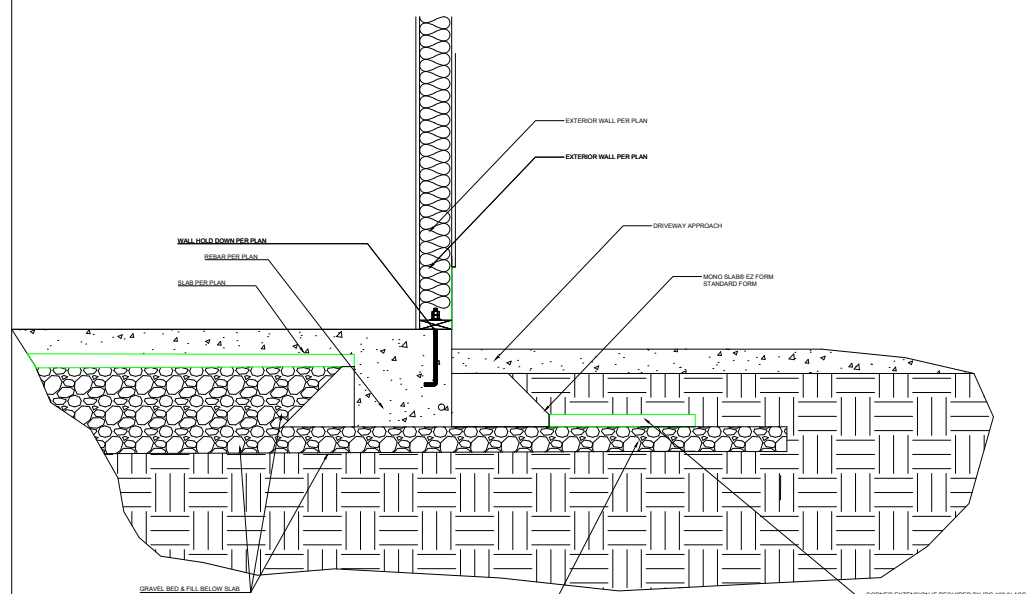
2- UNHEATED SPACE



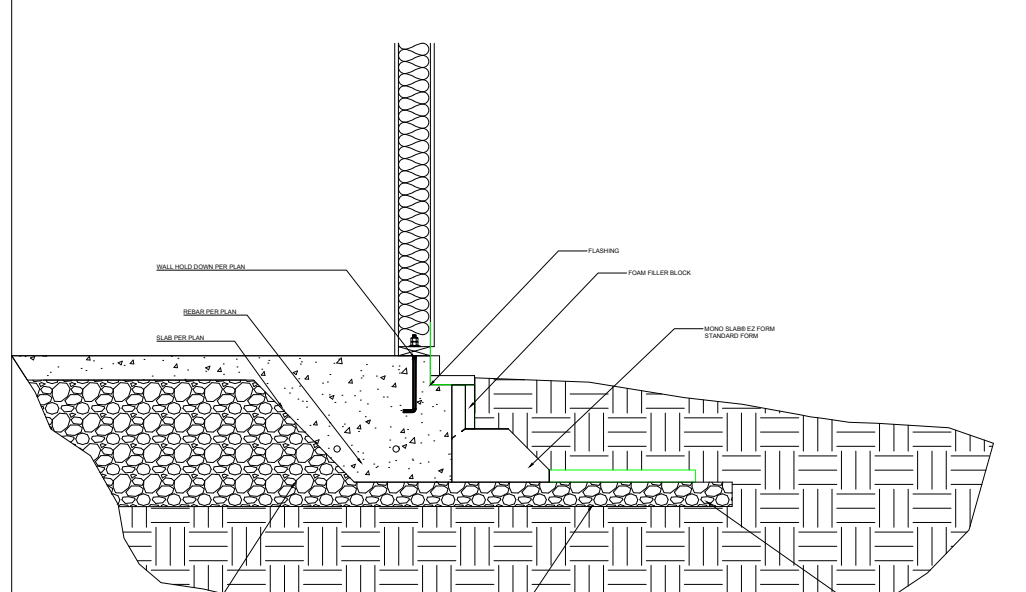
3- GARAGE STEP DOWN



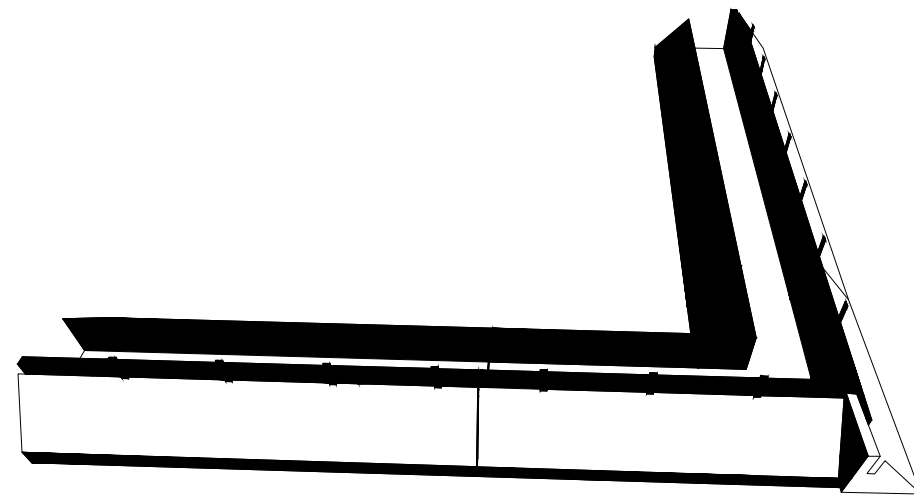
4- DRIVEWAY APPROACH / PORCH EDGE



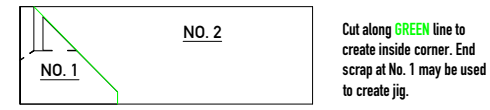
5- BRICK LEDGE



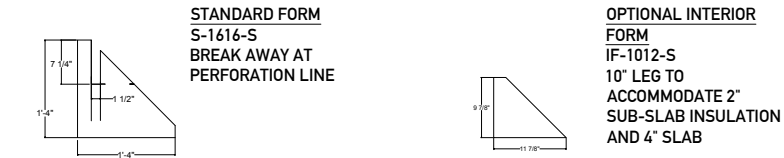
6- EXTERIOR CORNER



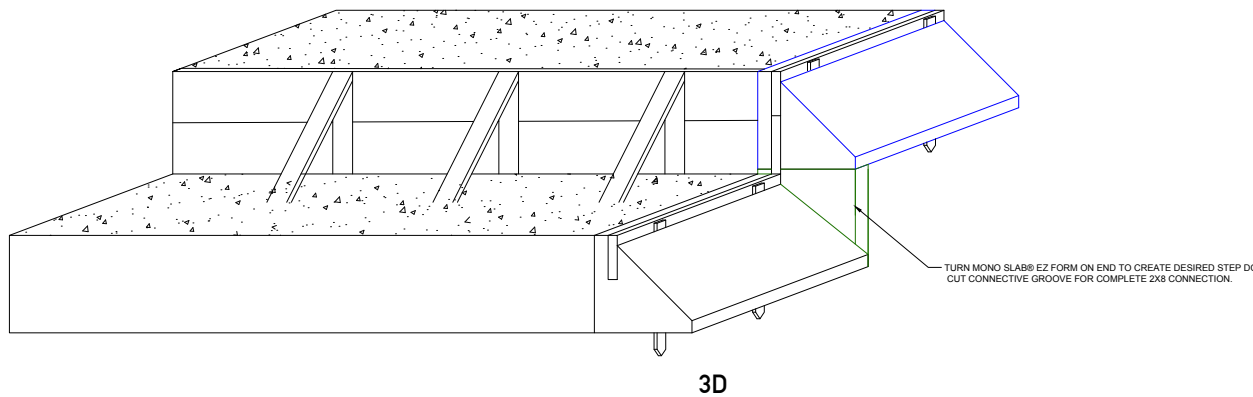
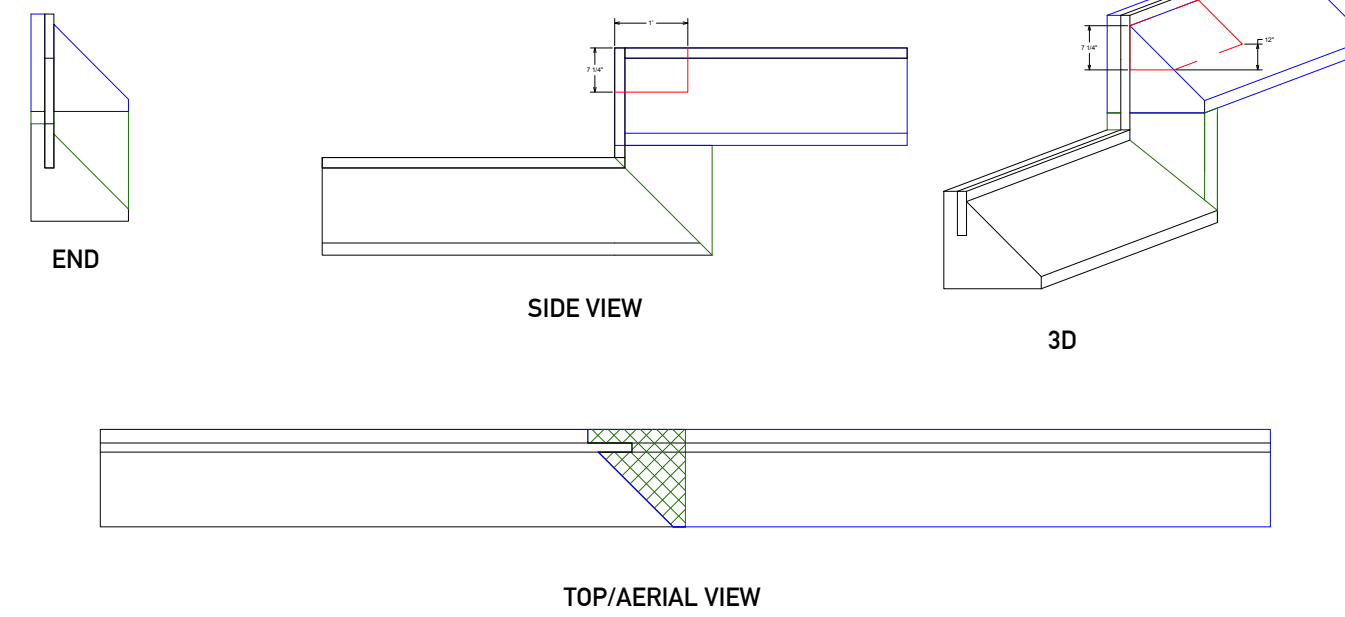
7- INSIDE CORNER



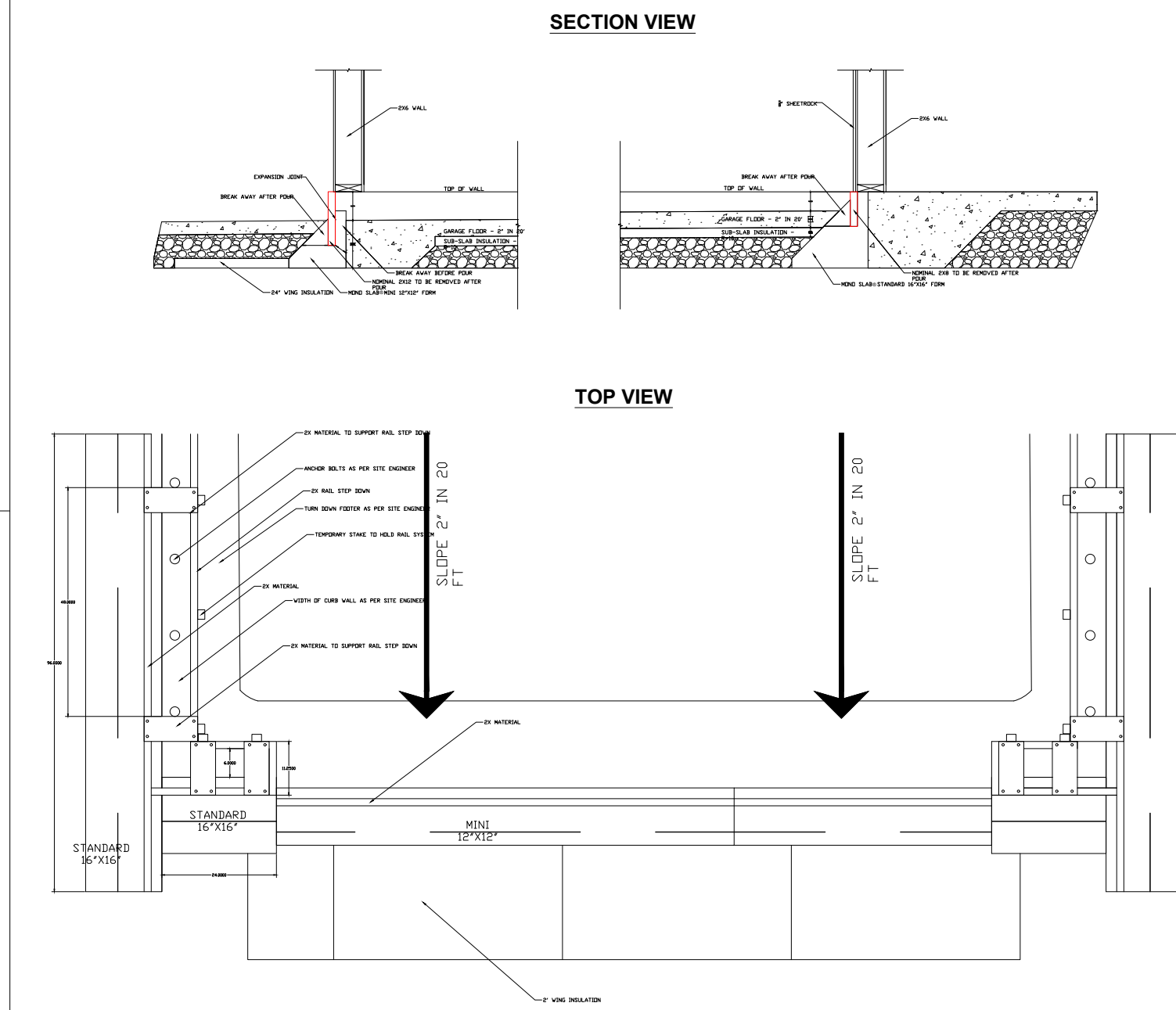
8- DIMENSIONS



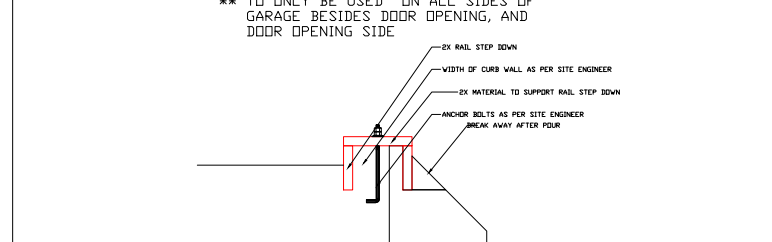
10- STEP DOWN



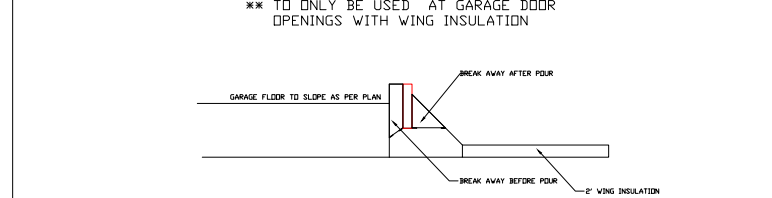
9- GARAGE TO HOUSE



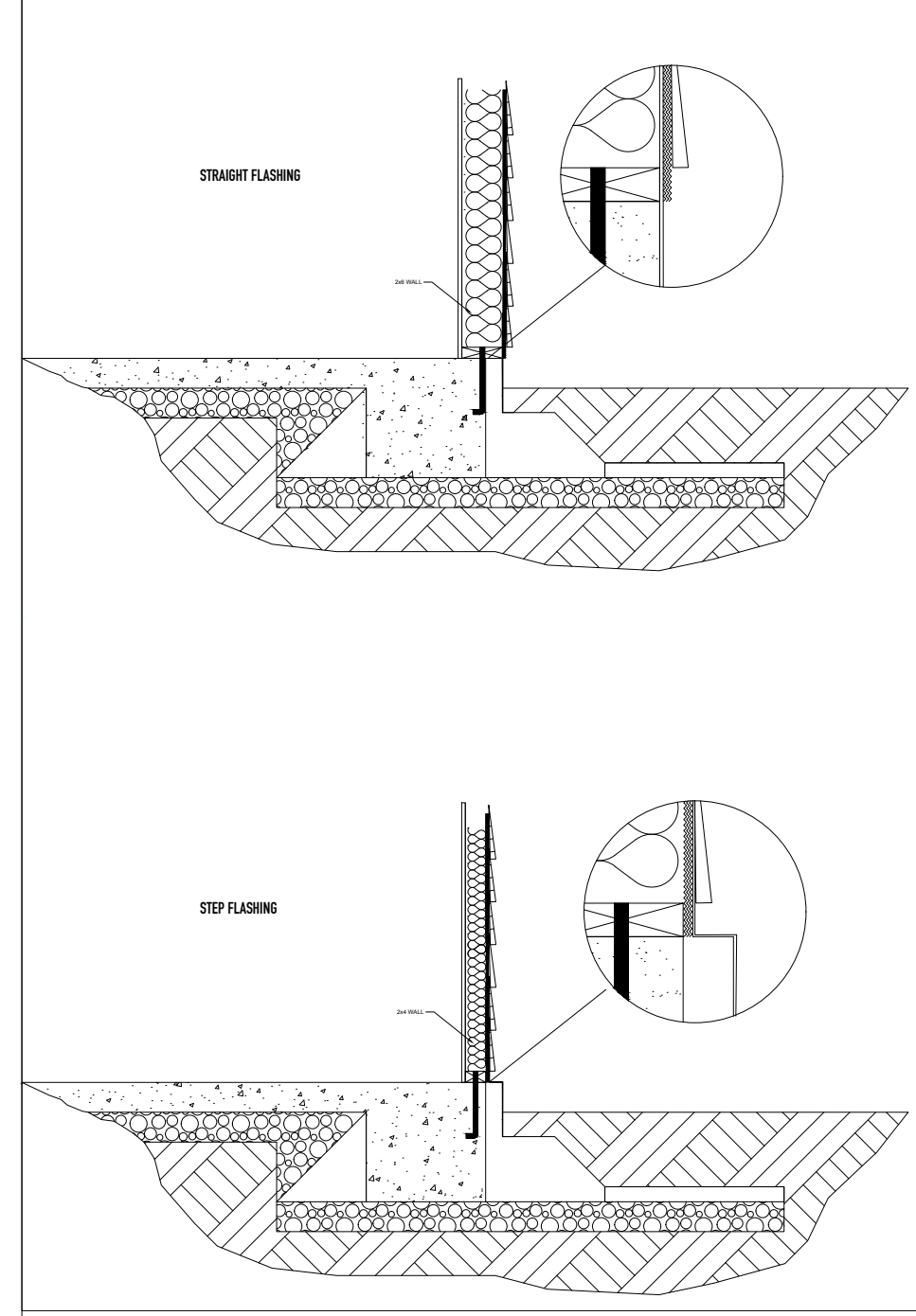
STANDARD FORM GARAGE CURB END VIEW



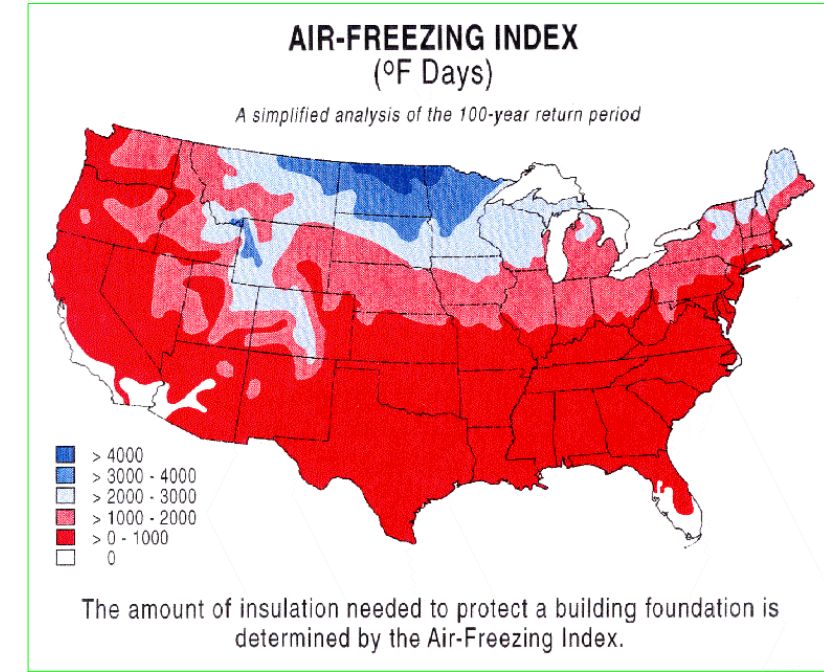
MINI FORM GARAGE DOOR OPENING END VIEW



11- FLASHING



AIR FREEZING INDEX MAP



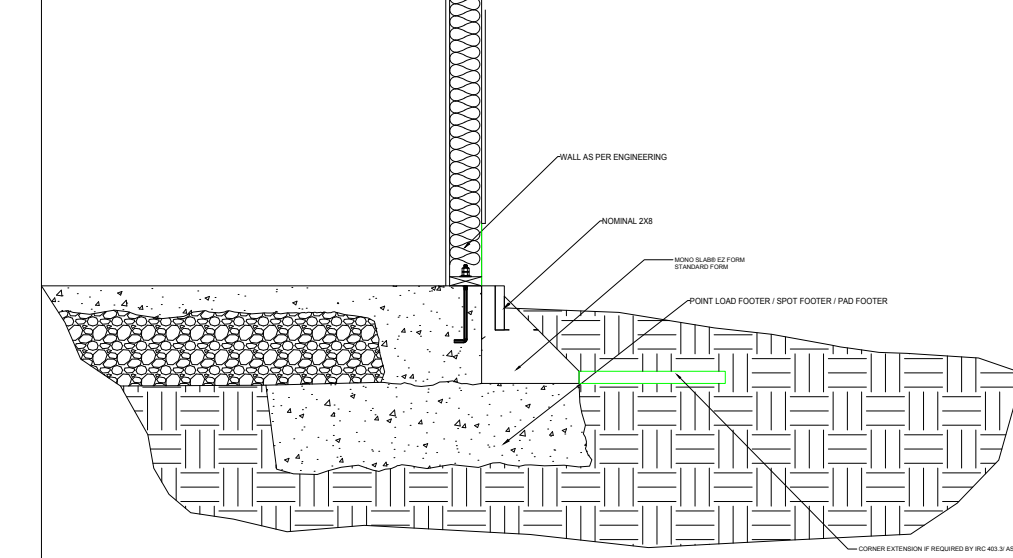
NOTE:
NO. 9-12 ARE GENERALIZED
DRAWINGS. NO 9-12 CONSULT
STRUCTURAL ENGINEER FOR SITE
SPECIFIC SIZING

US PATENT NO. 10, 024, 023 US PATENT NO. 10, 024, 024 PATENT PENDING

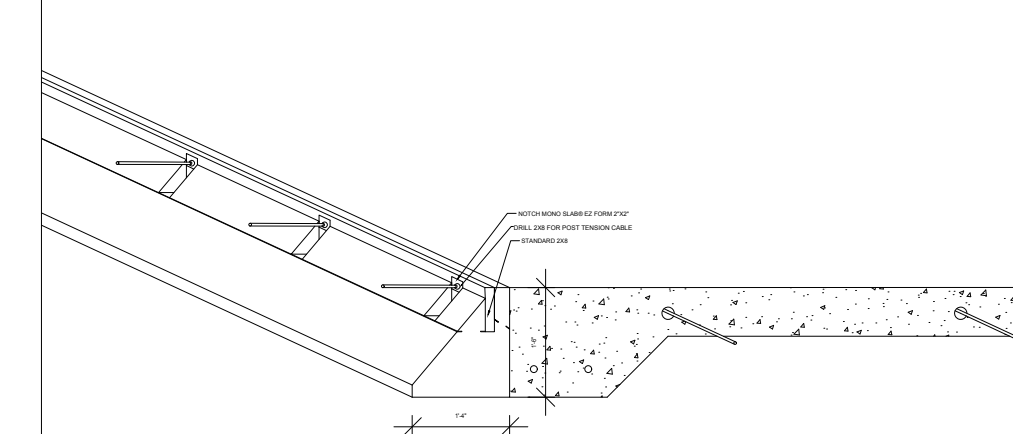


WWW.MONOSLABEZFORM.COM
208-558-5200

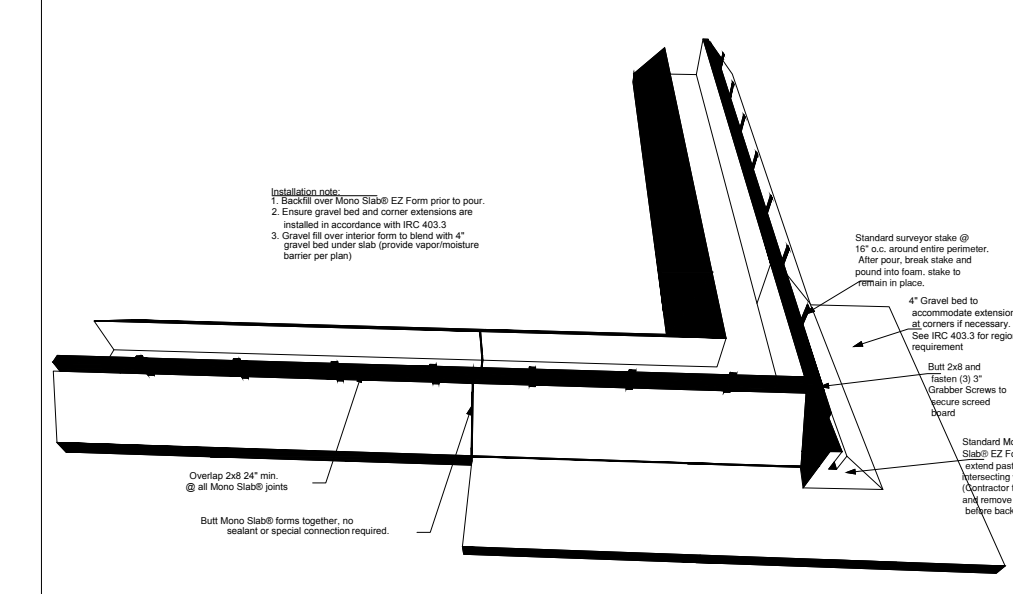
12- POINT LOAD FOOTER / SPOT FOOTER / PAD FOOTER



13- POST TENSION



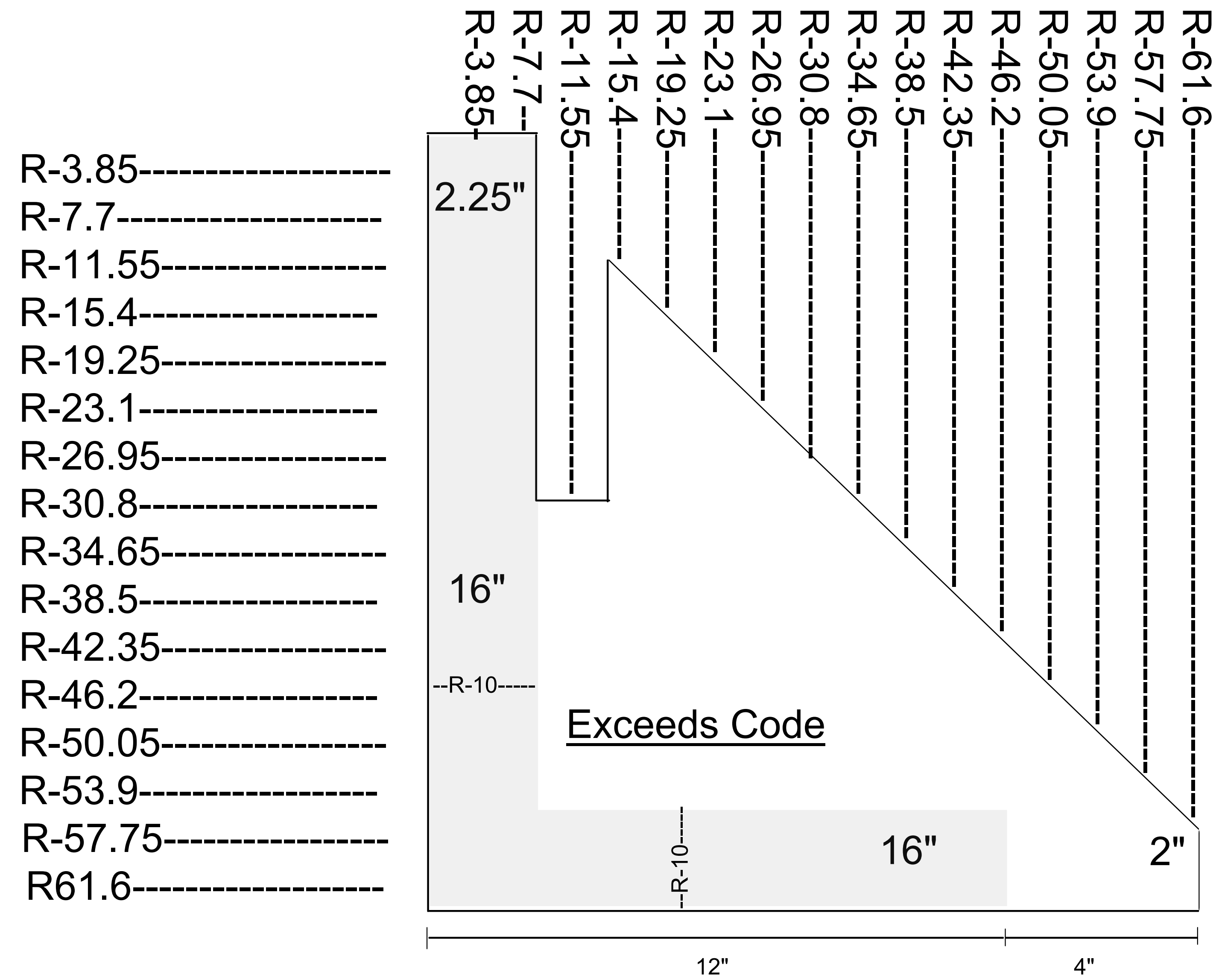
14- MONO SLAB® EZ FORM INSTALLATION



MONO SLAB® EZ FORM DETAILS S-1616-S

US PATENT NO. 10, 024, 023 US PATENT NO. 10, 024, 024 PATENT PENDING
PO BOX 371 ISLAND PARK, ID 83429 208-558-5200 WWW.MONOSLABEZFORM.COM

R-VALUE Standard 16"x16"



**ASTM C578 minimum standard is 3.6R per inch
Mono Slab EZ Form tests at 3.85R per inch**



REVISION DATE	DESCRIPTION
9/14/2018	Updated