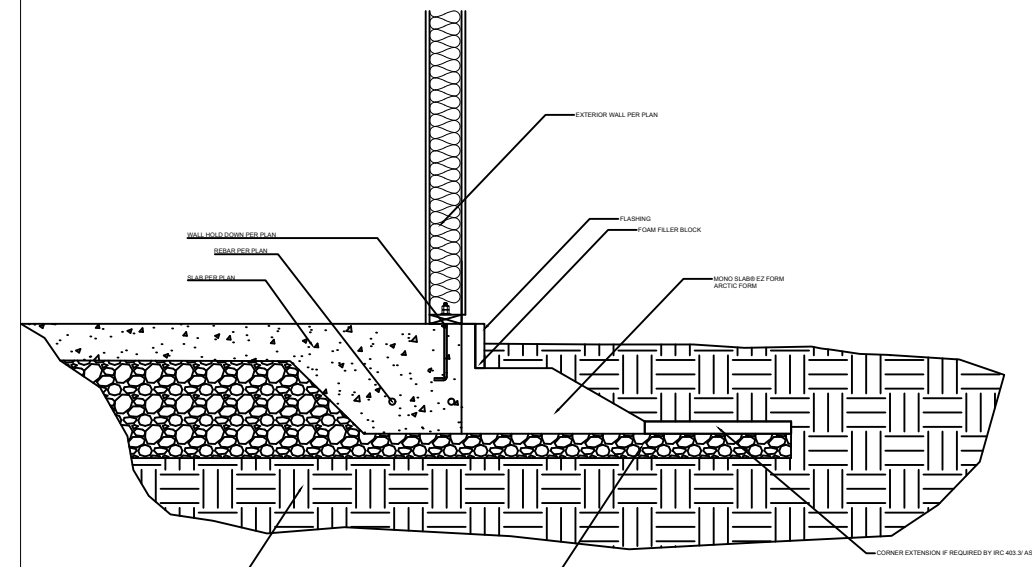
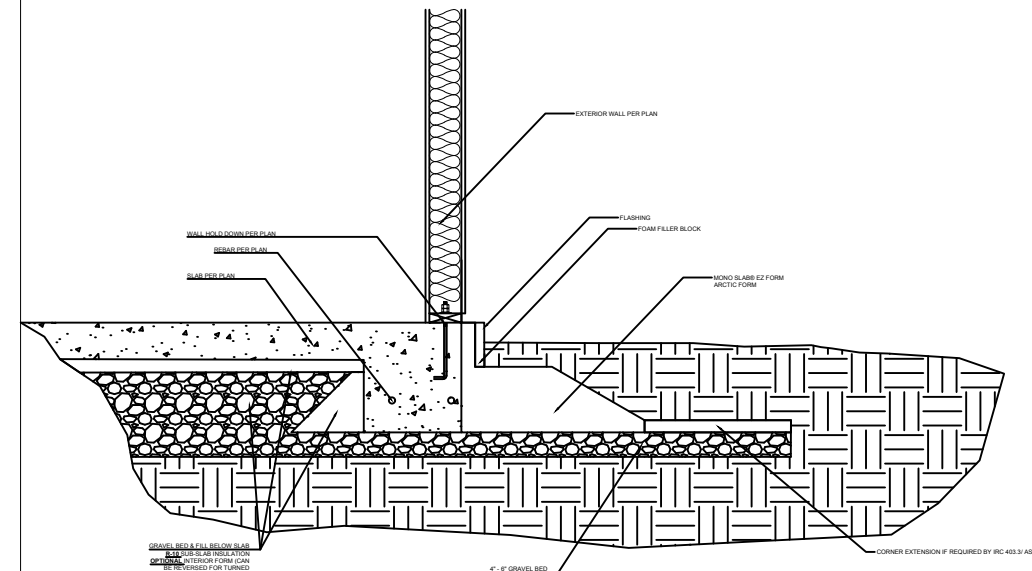


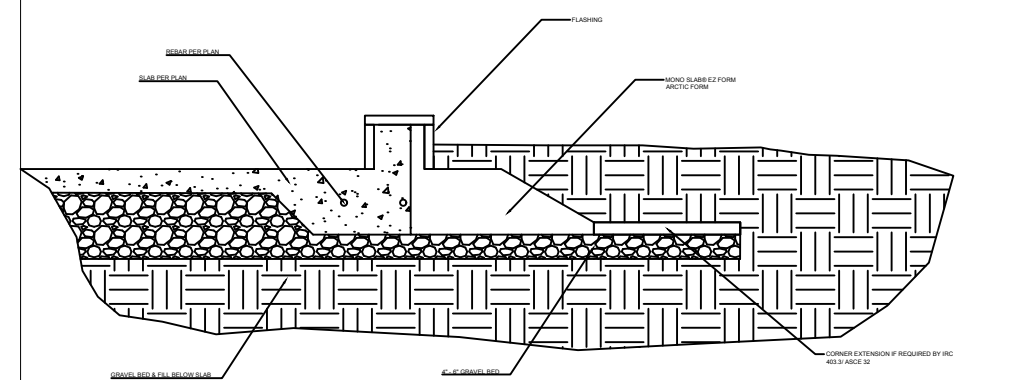
1- HEATED SPACE



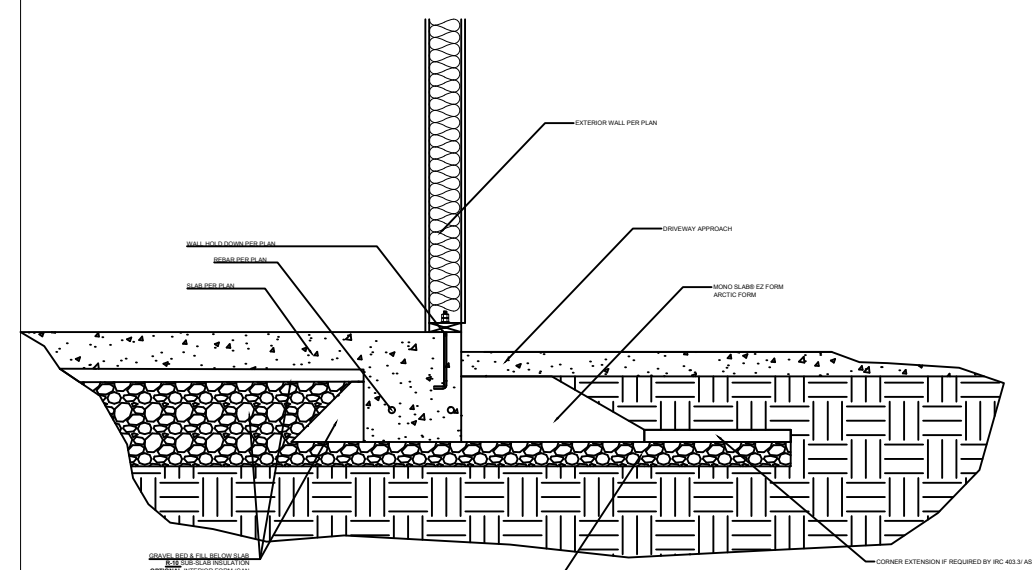
2- UNHEATED SPACE



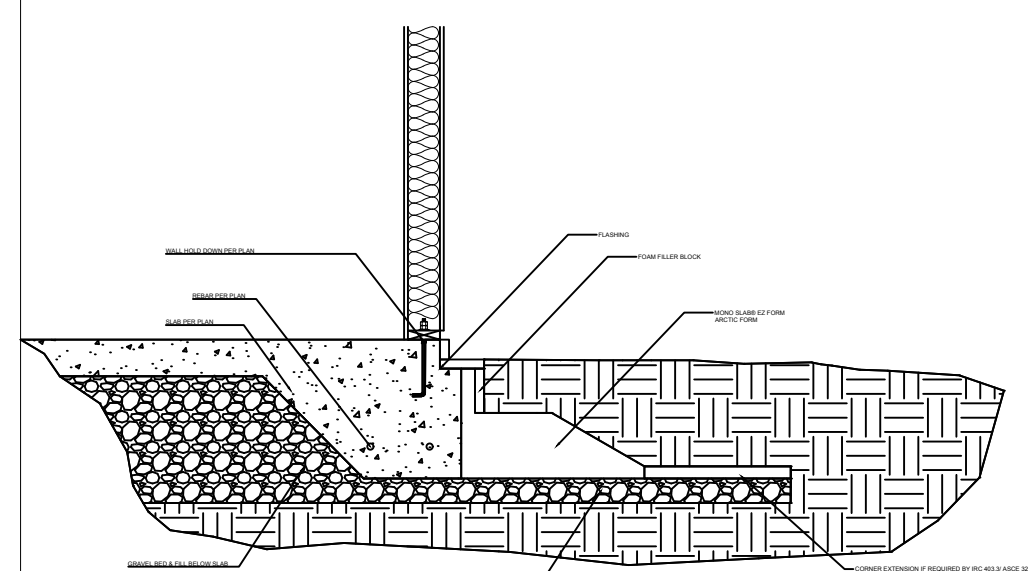
3- GARAGE STEP DOWN



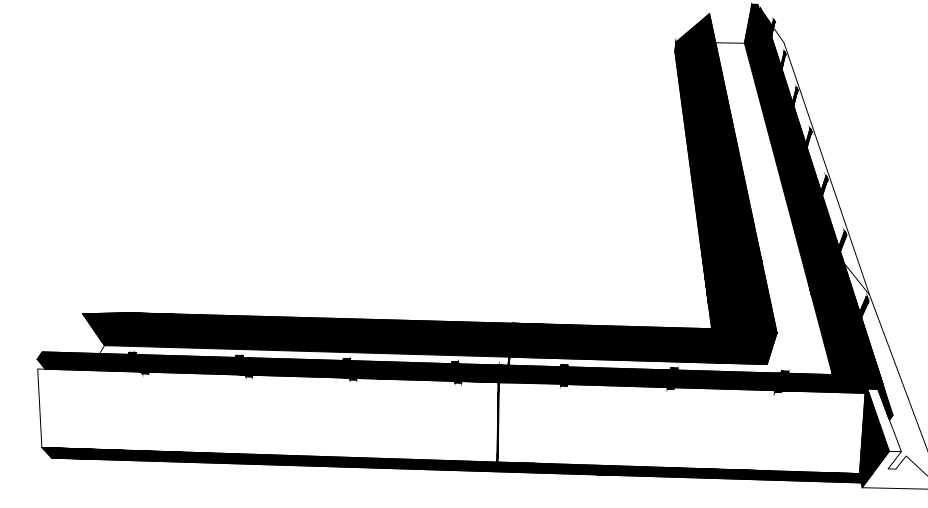
4- DRIVEWAY APPROACH / PORCH EDGE



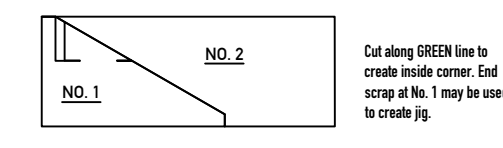
5- BRICK LEDGE



6- EXTERIOR CORNER

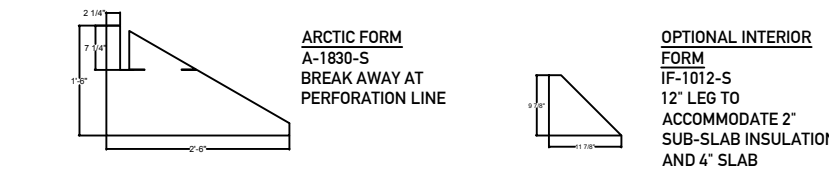


7- INSIDE CORNER



Cut along GREEN line to create inside corner. Cut along BLUE line to create jig.

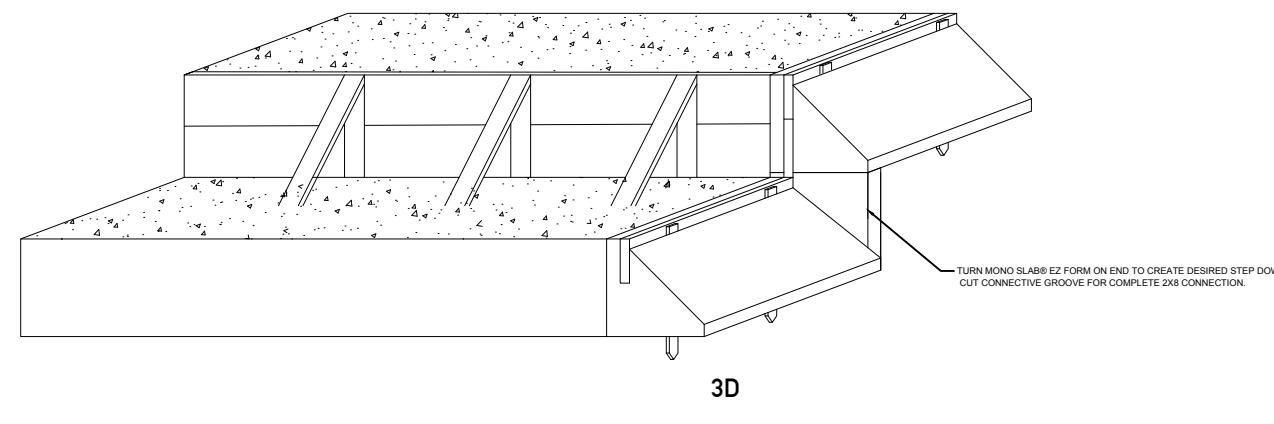
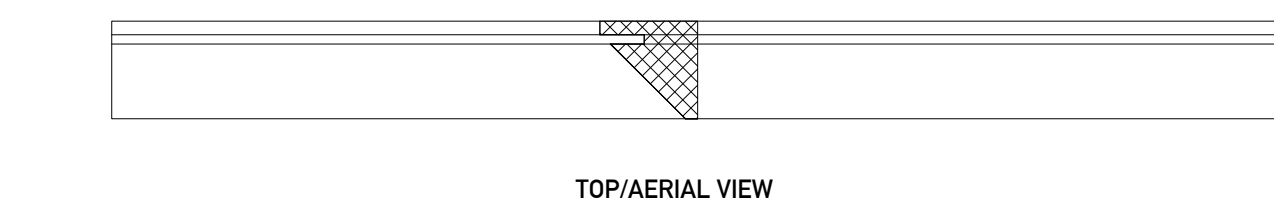
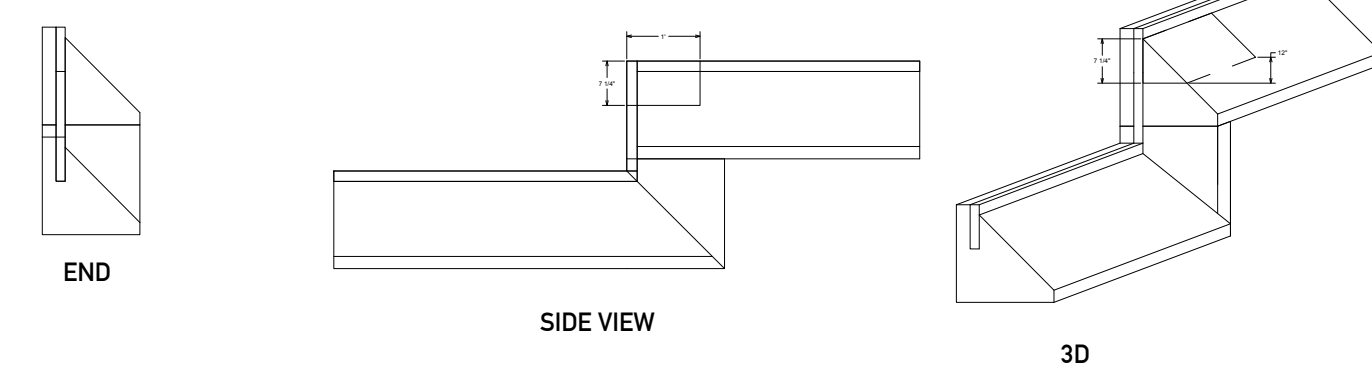
8- DIMENSIONS



ARCTIC FORM A-1830-S BREAK AWAY AT PERFORATION LINE

OPTIONAL INTERIOR FORM IF-1013-S 12" LEG TO ACCOMMODATE 2" SUB-SLAB INSULATION AND 4" SLAB

10- STEP DOWN



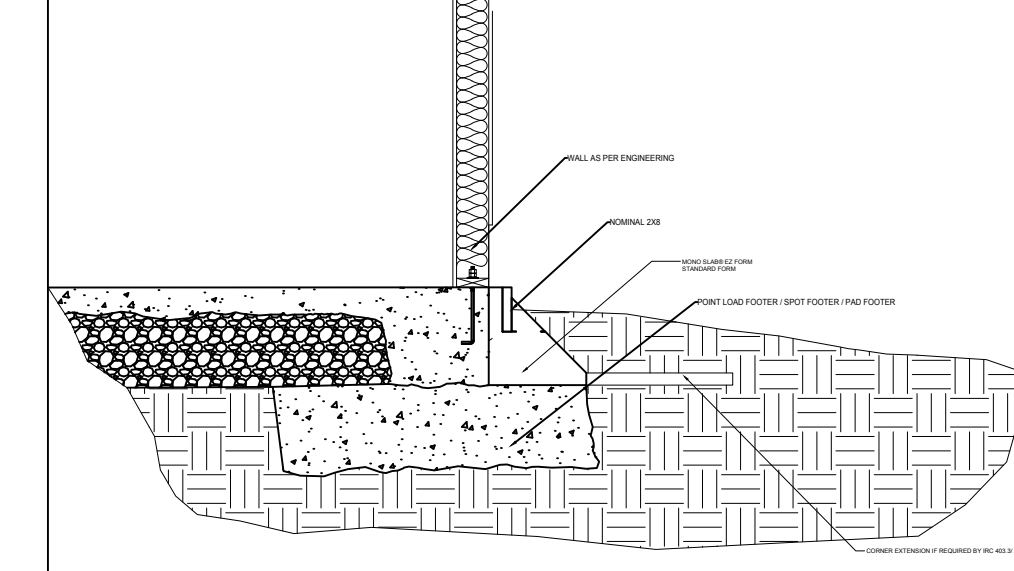
NOTE: NO. 9-12 ARE GENERALIZED DRAWINGS. NO 9-12 CONSULT STRUCTURAL ENGINEER FOR SITE SPECIFIC SIZING

US PATENT NO. 10, 024, 023 US PATENT NO. 10, 024, 024 PATENT PENDING

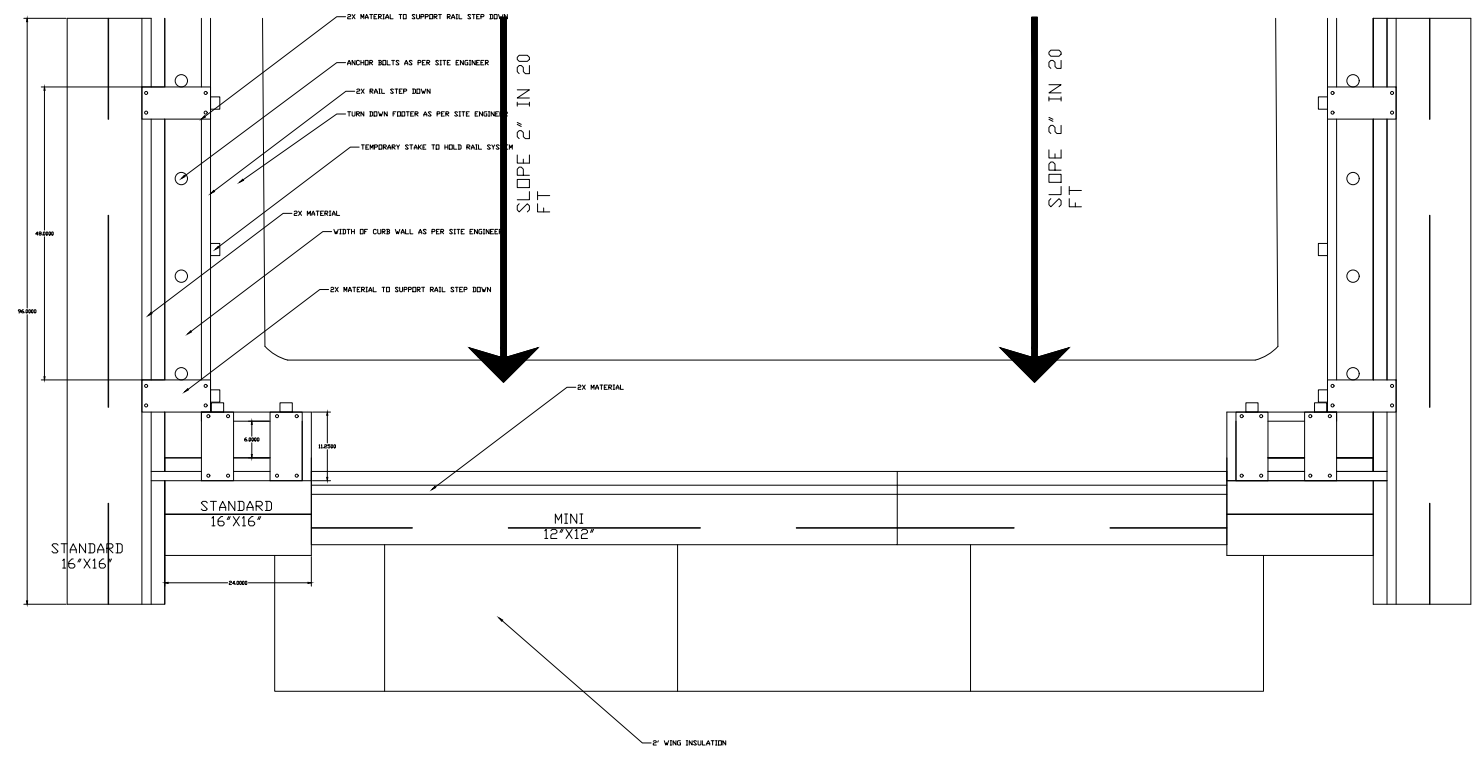
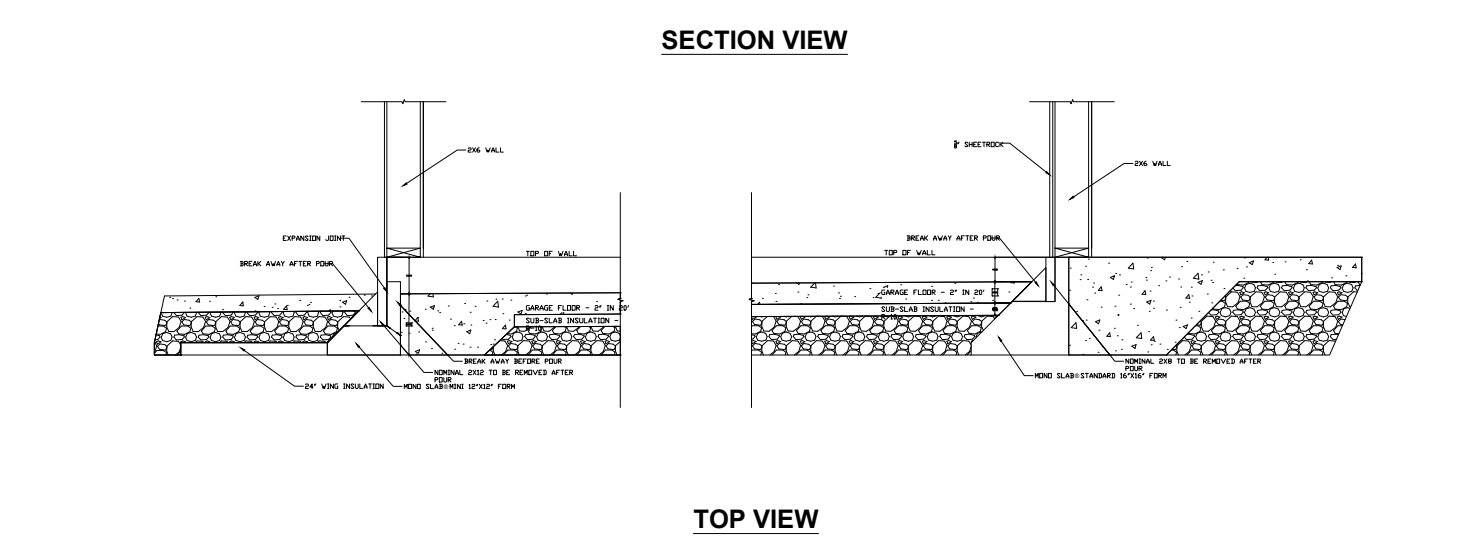


WWW.MONOSLABEZFORM.COM 208558-5200

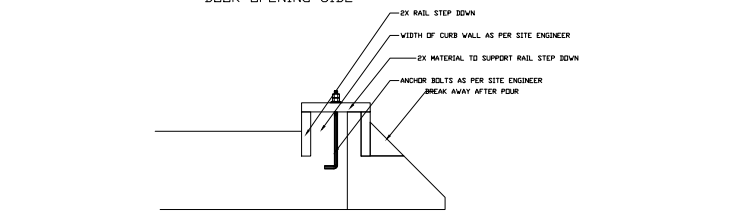
12- POINT LOAD FOOTER / SPOT FOOTER / PAD FOOTER



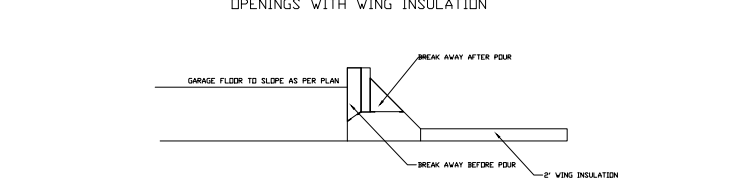
9- GARAGE TO HOUSE



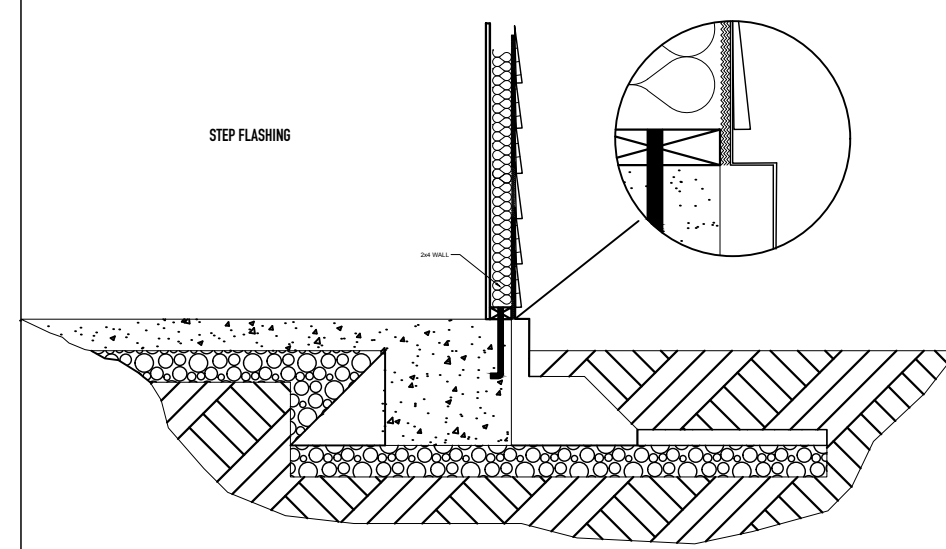
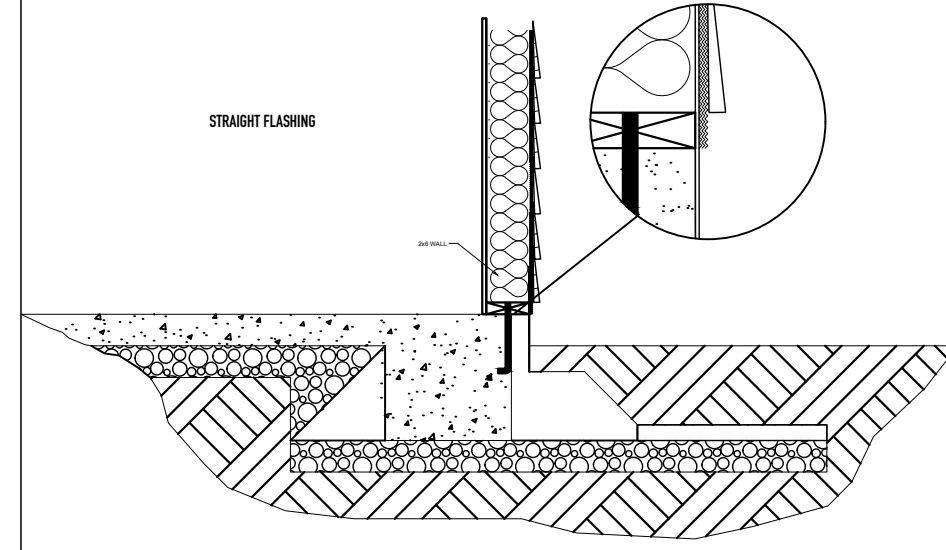
STANDARD FORM GARAGE CURB END VIEW



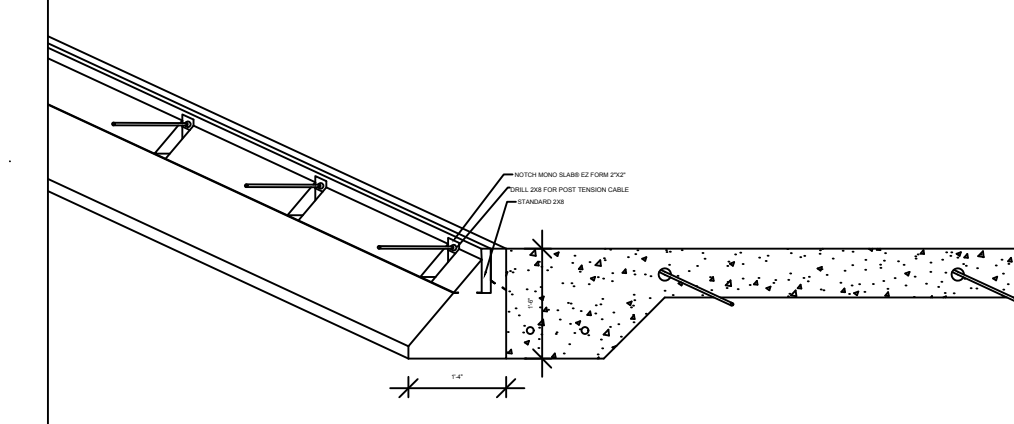
MINI FORM GARAGE DOOR OPENING END VIEW



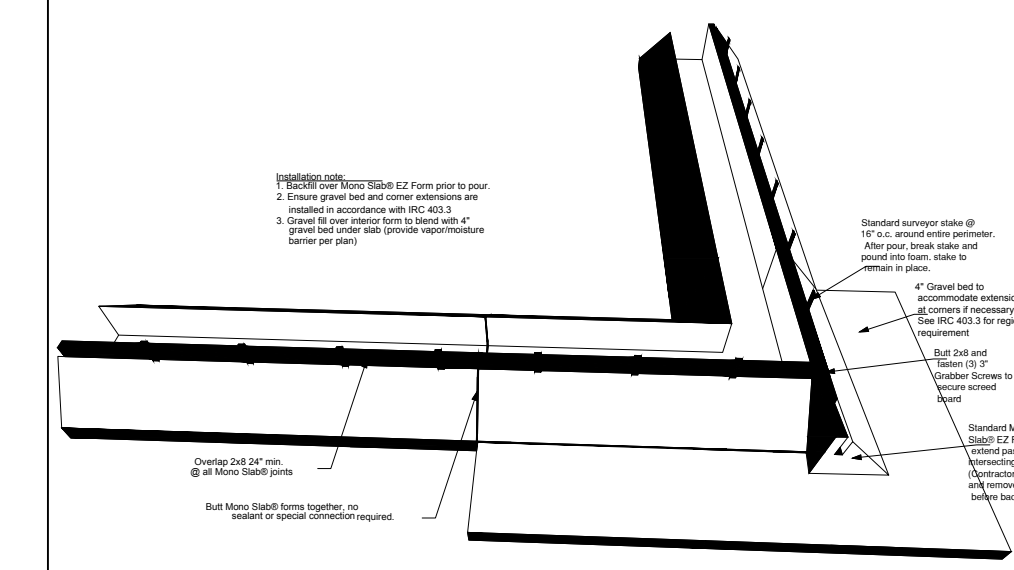
11- FLASHING



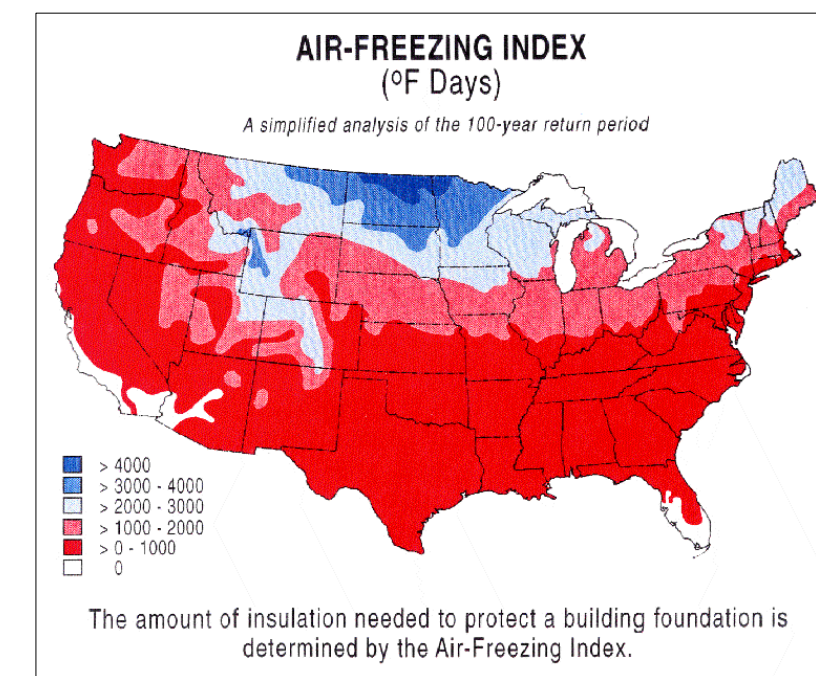
13- POST TENSION



14- MONO SLAB® EZ FORM INSTALLATION



AIR FREEZING INDEX MAP

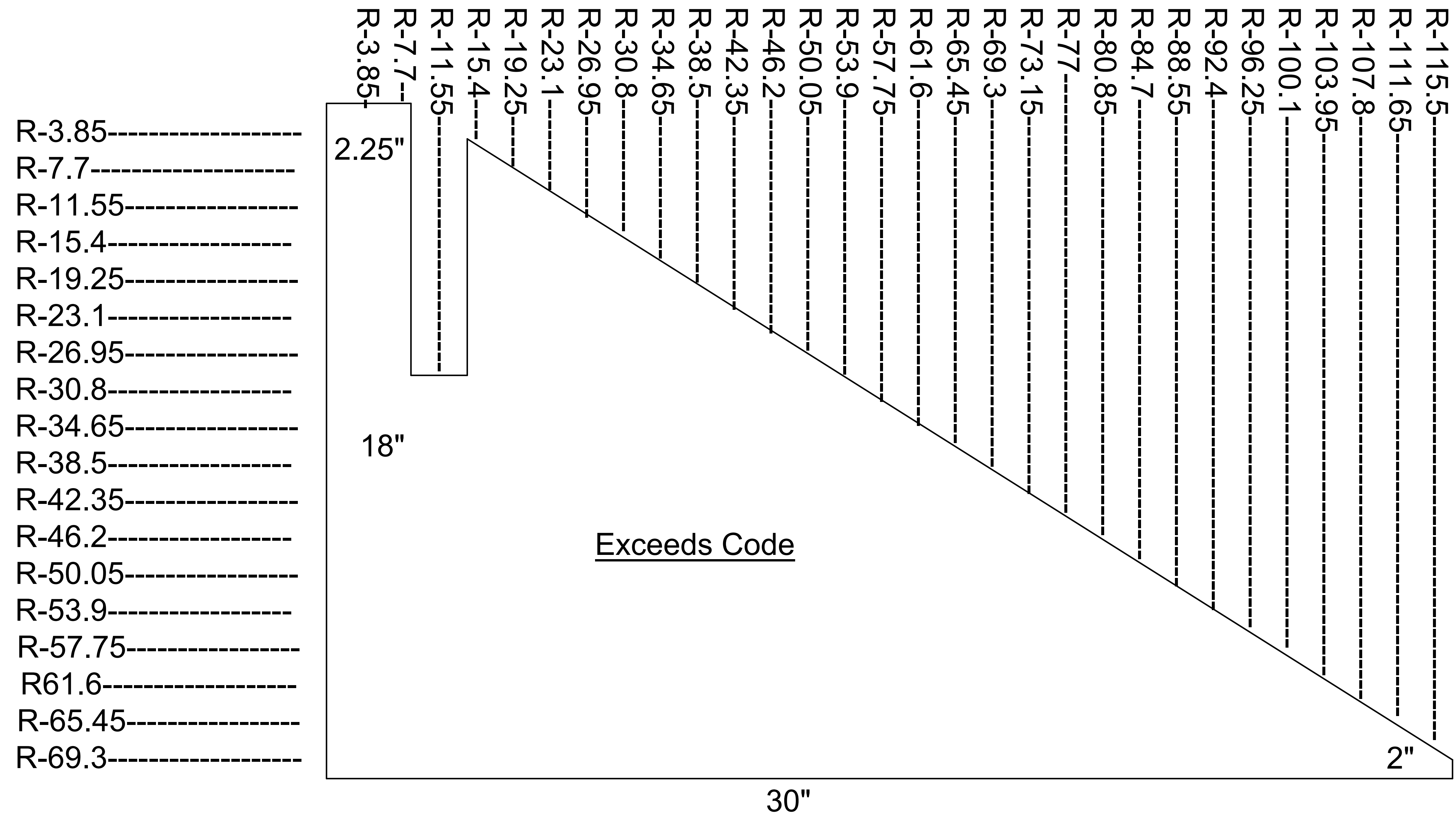


AIR-FREEZING INDEX (°F Days) A simplified analysis of the 100-year return period. The amount of insulation needed to protect a building foundation is determined by the Air-Freezing Index.

MONO SLAB® EZ FORM DETAILS A-1830-S

US PATENT NO. 10, 024, 023 US PATENT NO. 10, 024, 024 PATENT PENDING 208-558-5200 WWW.MONOSLABEZFORM.COM

R-VALUE Arctic Form 18"x30"



**ASTM C578 minimum standard is 3.6R per inch
Mono Slab EZ Form tests at 3.85R per inch**



| SHEET TITLE: Mono Slab EZ Form Details | |
|--|------------------|
| REVISION DATE | DESCRIPTION |
| 2/9/2016 | ADDED DETAIL (1) |
| 9/14/2018 | Updated |
| | |
| | |