

NEWSLETTER

MONTHLY UPDATED INDUSTRY NEWS



ANCHORAGE HOME SHOW

The Mono Slab® sales team was a vendor at the Anchorage Home Builders Association Home Show in Anchorage, Alaska this month. Look for them on the road as they travel to more shows this season!

EPS VS XPS

WHAT ABOUT R-VALUE RETENTION?

Expanded Polystyrene insulation has a higher R-value retention as compared to Extruded Polystyrene. While Extruded Polystyrene is characterized by off gassing, the gasses eventually escape, meaning the initially high R-value gradually decreases. Insulation R-value is lost in unison with the gas escape. In short, EPS outperforms XPS in the context of R-value across the long term, ensuring the structure in question is climate controlled exactly as desired.

HABITAT FOR HUMANITY & NORTH IOWA AREA COMMUNITY COLLEGE BUILDING TRADES

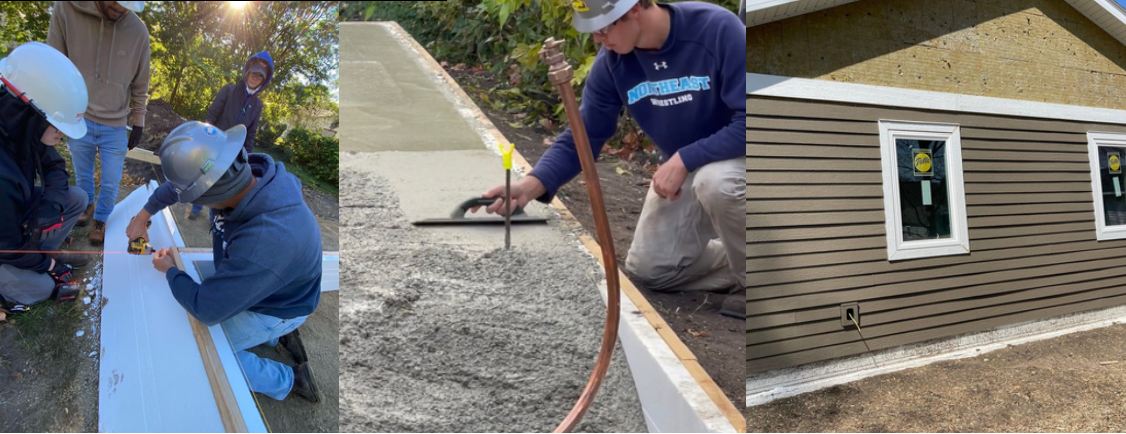
North Iowa Area Community College (NIACC) offers a Diploma program designed for individuals interested in a career in residential, commercial, or industrial building construction. Students were able to utilize the Mono Slab® technology on an amazing home for Habitat for Humanity in Northern Iowa. Mono Slab® continues to prove time, labor, and money savings.

<https://www.instagram.com/niaccbuildingtrades/?hl=en>



ENVIRONMENTAL IMPACT

Expanded Polystyrene is superior to Extruded Polystyrene in the context of the environment as EPS has never and likely will never be made with HCFCs that compromise the environment. Furthermore, those looking to preserve our fragile planet favor EPS as it does not use any type of dye. Add in the fact that EPS can be constructed with recycled content and there is even more reason to favor EPS over XPS. In contrast, XPS typically contains dyes along with branding elements. In terms of the use of recycled materials, XPS is comparably inconsistent.



SCAN ME



Office: 208-558-5200
info@monoslabezform.com
www.monoslabezform.com

