

Excavation To Framing In Just **3 Days!**



Step 1



Excavation & Site Prep for Footer



Step 2



Set the Forms, Level & Square Then Stake

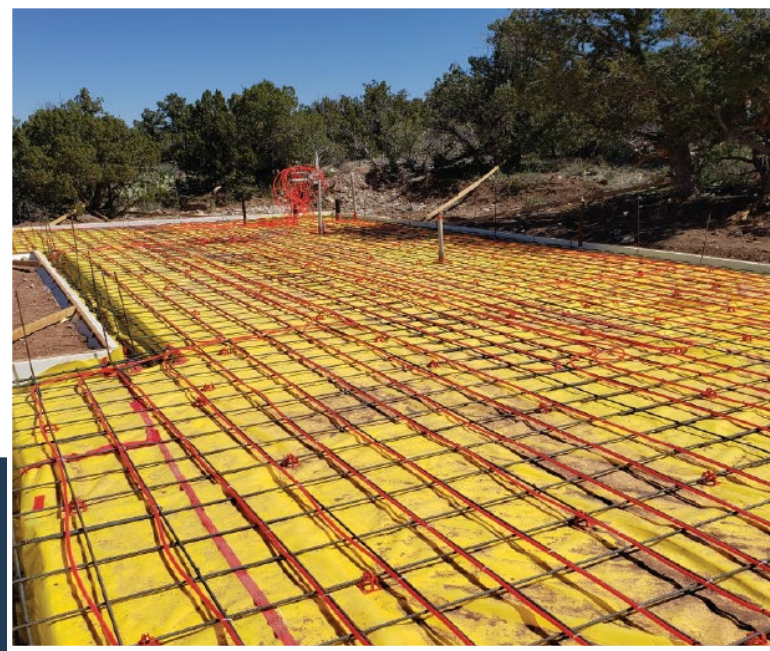


Step 3



Install Additional Systems

Rebar, Underground Plumbing, Sub-Slab Insulation, Conduit, Electrical Etc.



Step 4



Placing and Pouring Concrete



Step 5



Flashing

