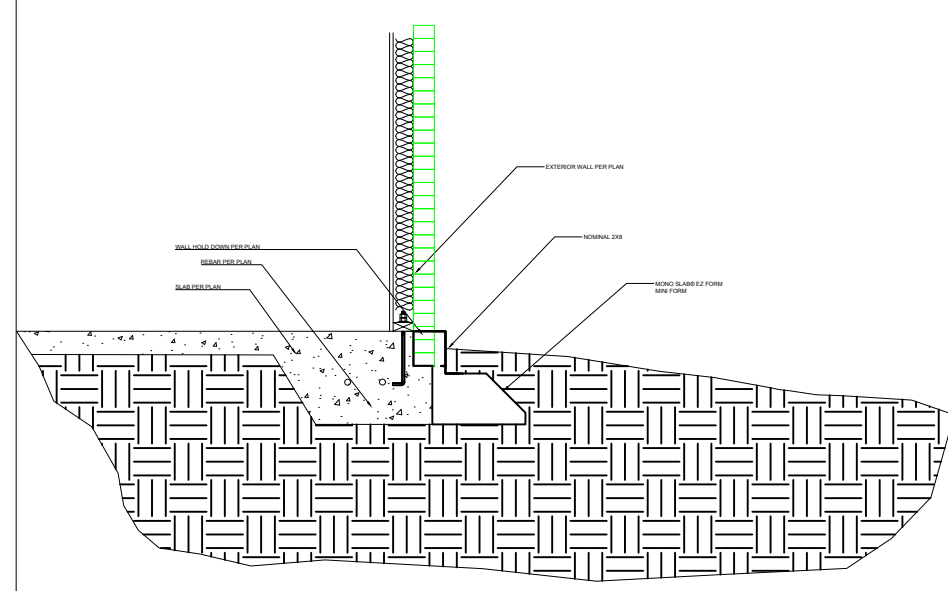


1- HEATED SPACE

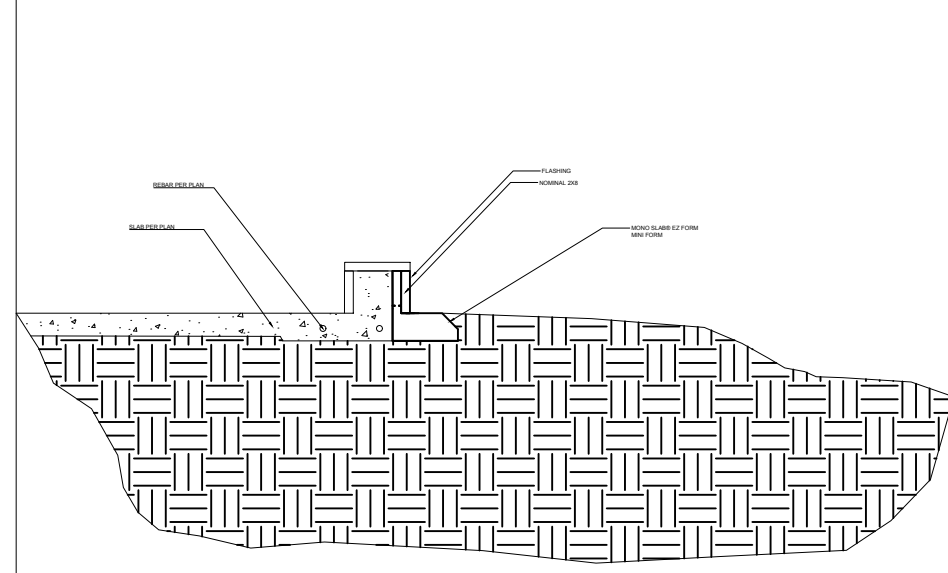


2- UNHEATED SPACE

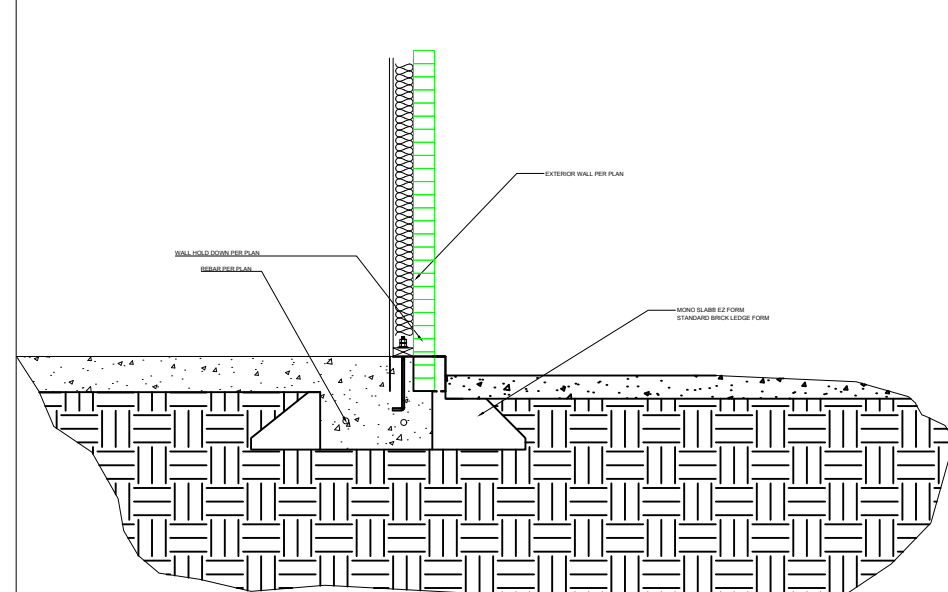


Not Applicable

3- GARAGE STEP DOWN



4- DRIVEWAY APPROACH



5- BRICK LEDGE

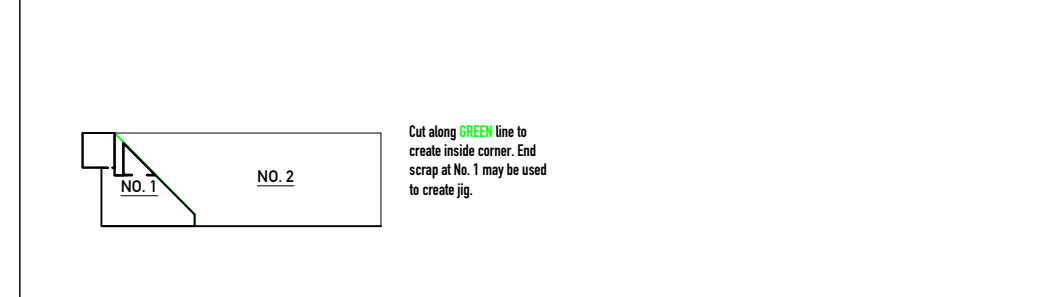


Not Applicable

6- EXTERIOR CORNER

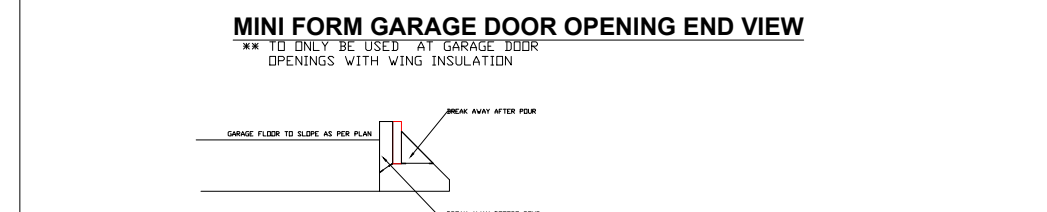
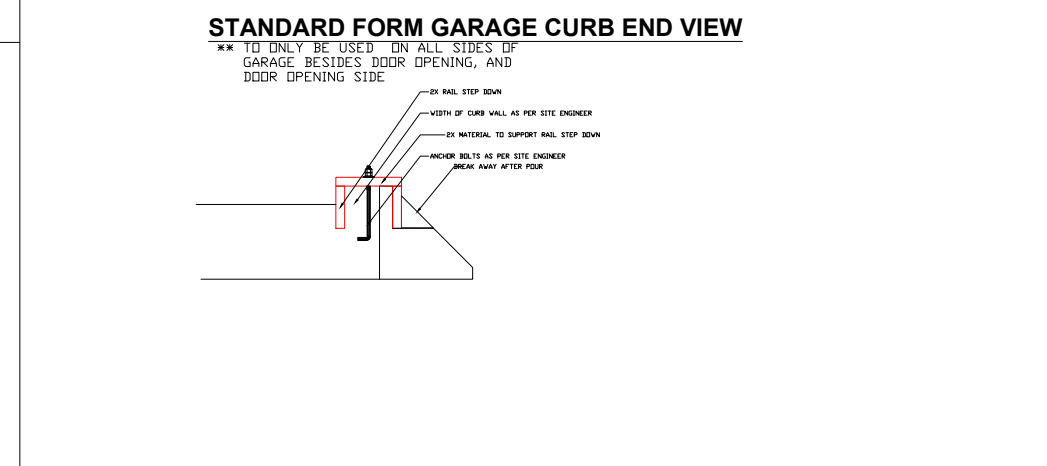
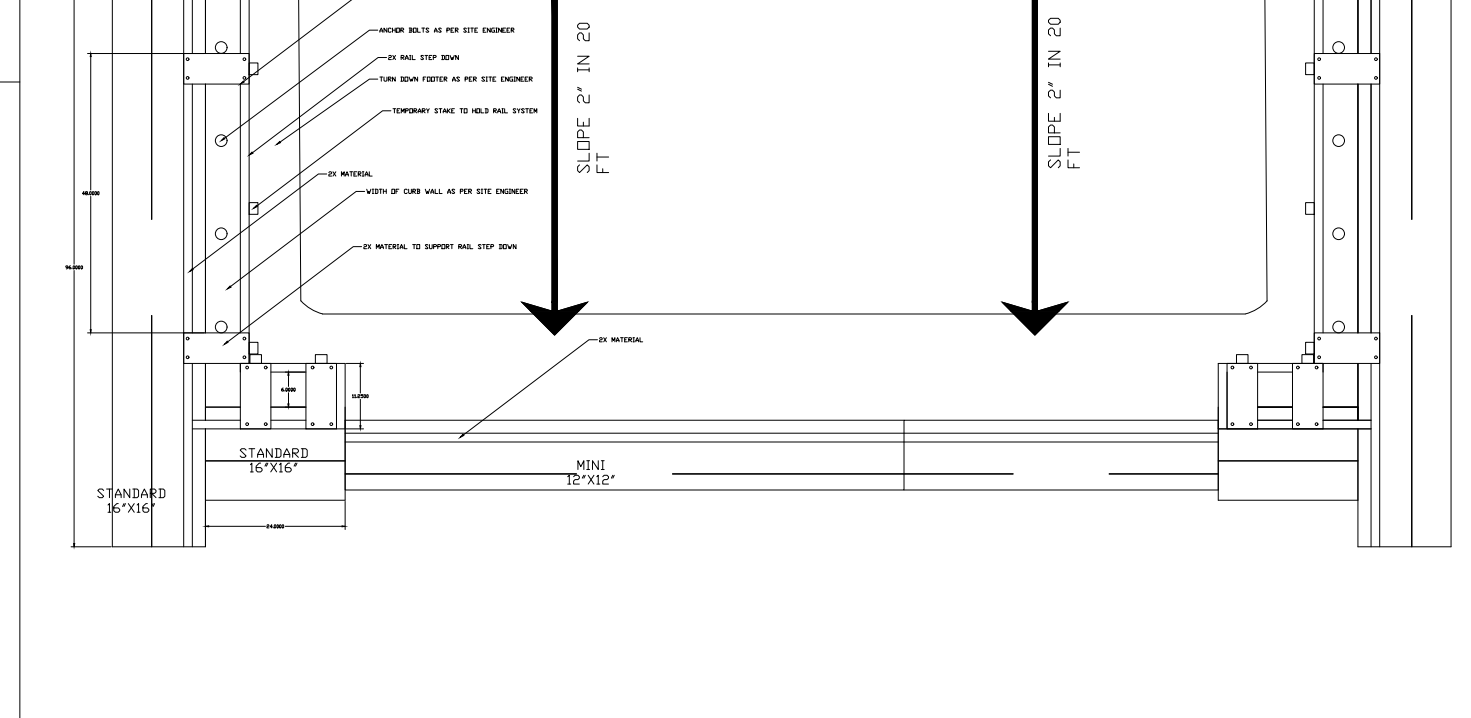
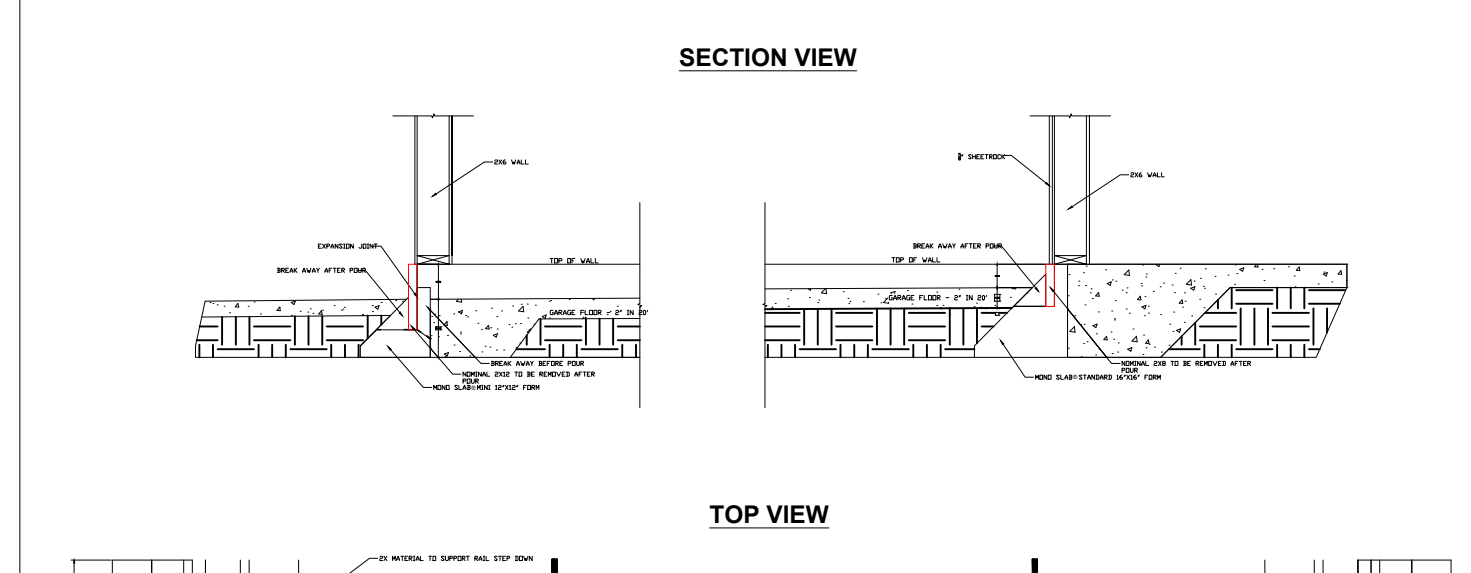
Not Applicable

7- INSIDE CORNER

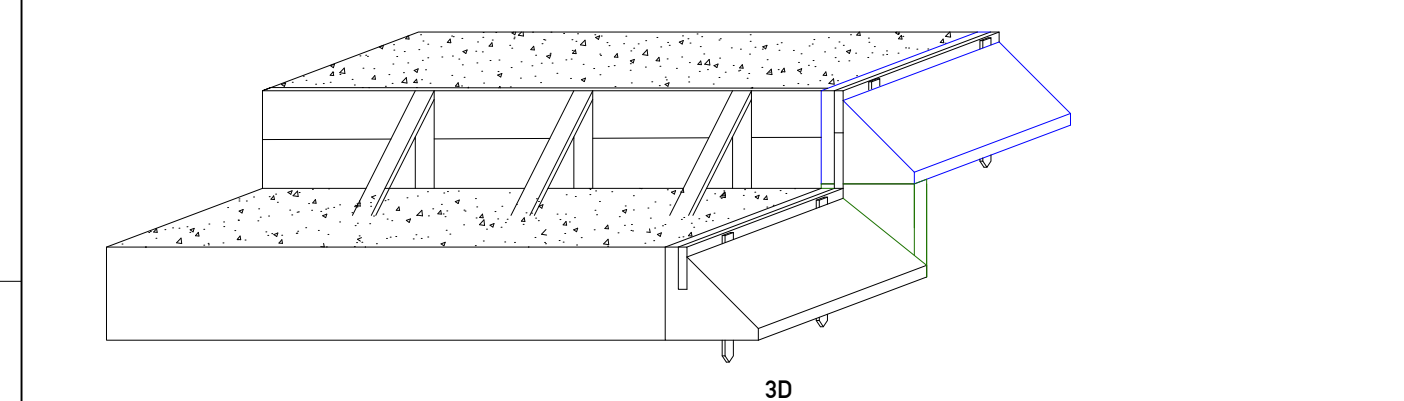
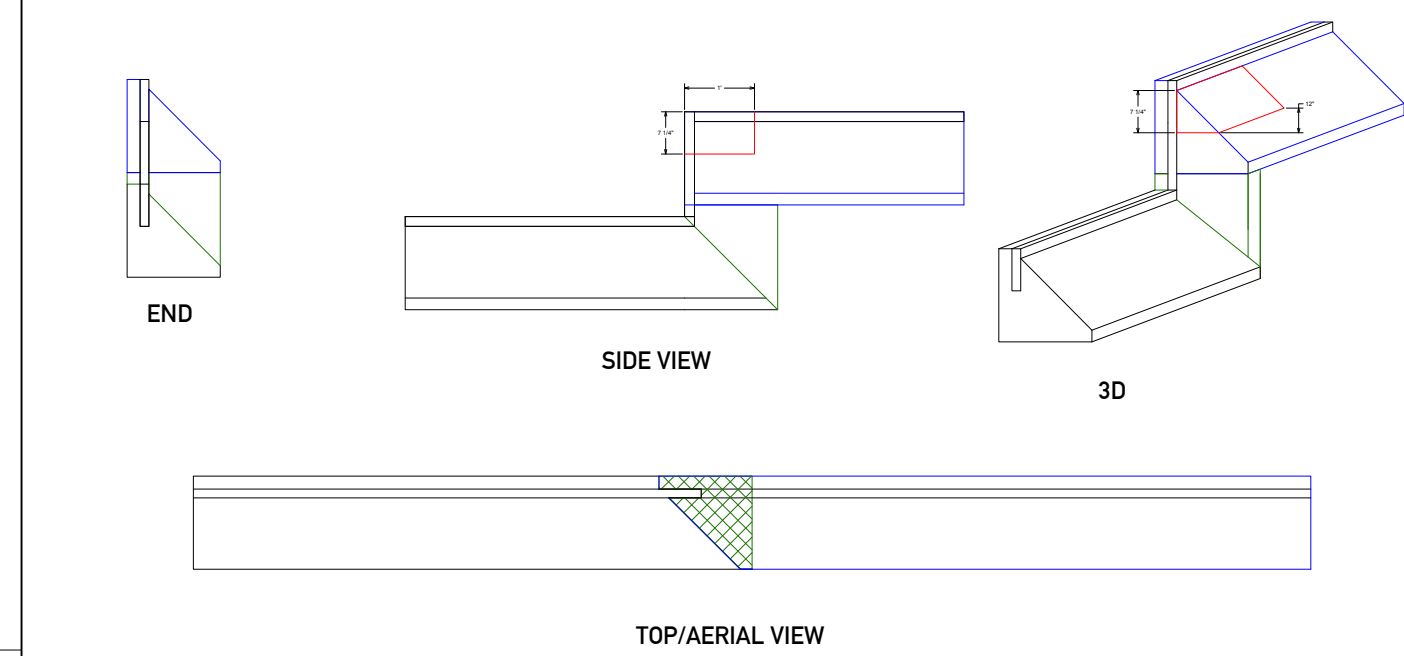


8- DIMENSIONS
MINI FORM M-1212-S BREAK-AWAY AT PERFORATION LINE
OPTIONAL INTERIOR FORM IF1012-S 1" LEG TO ACCOMMODATE 2" SUB-SLAB INSULATION AND 4" SLAB

9- GARAGE TO HOUSE

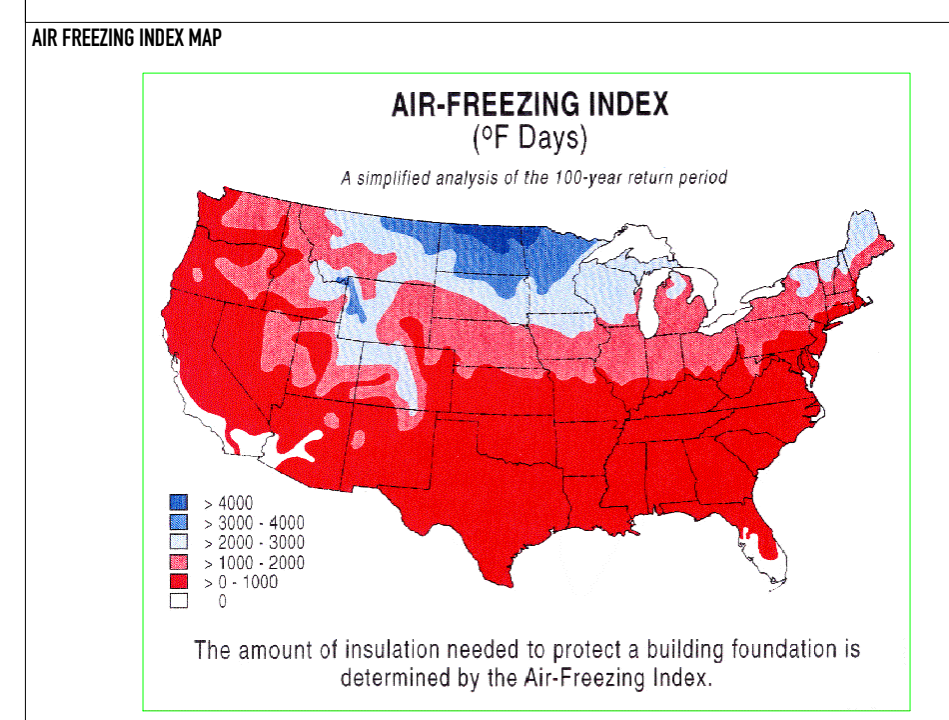


10- STEP DOWN



11- FLASHING

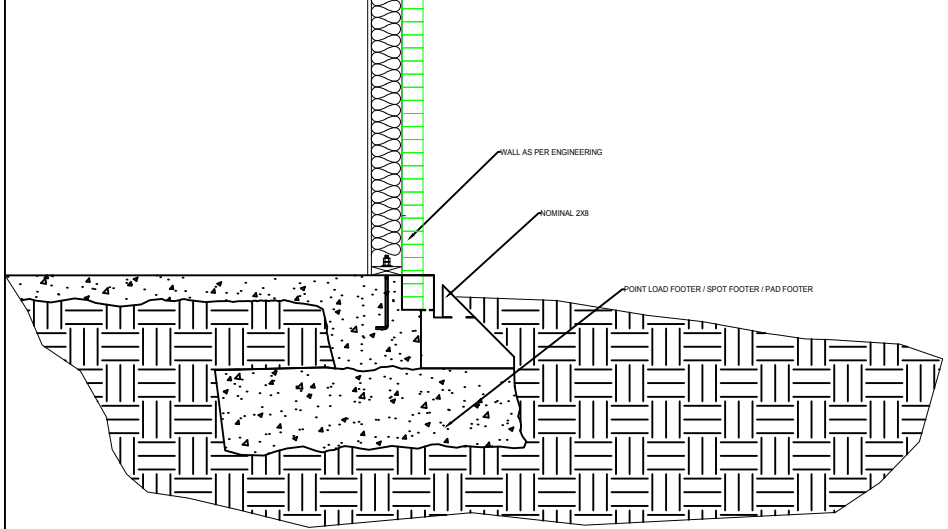
Not Applicable



NOTE:
NO. 9-12 ARE GENERALIZED DRAWINGS. NO 9-12 CONSULT STRUCTURAL ENGINEER FOR SITE SPECIFIC SIZING

US PATENT NO. 10, 024, 023 US PATENT NO. 10, 024, 024 PATENT PENDING
SBL-1616
Mono Slab® EZ Form LLC
WWW.MONOSLABEZFORM.COM
208558-5200

12- POINT LOAD FOOTER / SPOT FOOTER / PAD FOOTER



13- POST TENSION

Not Applicable

14- MONO SLAB® EZ FORM INSTALLATION

Not Applicable

MONO SLAB® EZ FORM DETAILS SBL-1616-S

US PATENT NO. 10, 024, 023 US PATENT NO. 10, 024, 024 PATENT PENDING
PO BOX 371 ISLAND PARK, ID 83429 208-558-5200 WWW.MONOSLABEZFORM.COM